

SERVICE IDEAS

PRODUCT BOOK

2025



BUFFET | AIRPOTS | SERVERS | TABLETOP

BUILDING ON A LEGACY

BEVERAGE, BUFFET, AND BEYOND

For 79 years, we have proudly created exceptional serviceware, grounded in our commitment to quality and elegance inspired by my grandparents' legacy. As we enter the final year of the decade, we continue to innovate with fresh designs that enhance beverage service and beyond.

We are thrilled to introduce a new serveware line featuring tortilla warmers and molcajete bowls, celebrating communal dining and authentic service.

Additionally, our new tableware collection combines contemporary design with Art Deco charm.

It features durable pieces that enhance the dining experience with sleek lines and vibrant metallics, along with a new sleek tray that complements this aesthetic.

We are also excited to announce the addition of new non-beverage buffet items that perfectly complement our existing collections, creating cohesive setups for any event, from formal gatherings to casual celebrations.

Thank you for choosing us as your partner in creating unforgettable dining experiences. Here's to another inspired year and the milestone ahead!

A handwritten signature in black ink that reads "Megan M. Blohowiak". The signature is fluid and cursive.

Megan Murray Blohowiak
Service Ideas President

HOW TO USE THIS CATALOG

HELPFUL SYMBOLS



1-2 Hours
Hot



Over 8
Hours Cold



5 Year
Warranty



Custom
Wrapping



2-3 Hours
Hot



Over 12
Hours Cold



SI Exclusive
Item



Custom
Print



4-6 Hours
Hot



Hand Wash
Only



NSF Listed



Hydro
Dipping



6-8 Hours
Hot



Dishwasher
Safe



Anti-Bacterial
Coating



Over 6
Hours Hot



1 Year
Warranty



Made in
USA

CATALOG SHORTCUTS

08 BUFFET

52 AIRPOTS

76 SERVERS

142 TABLETOP

190 CUSTOMIZATION

191 SI COMPONENTS

192 INDEX

194 TERMS & CONDITIONS

195 CARE & HANDLING

195 FAQ

196 REP MAP

WHY SERVICE IDEAS?

Our commitment to excellence is reflected in every aspect of our business. From designing superior products that elevate food and beverage service, to meticulous quality testing that ensures they meet the highest standards, we focus on delivering innovative solutions that operators can trust. With over 1,800 products stocked and ready to ship within 48 hours, we prioritize care, efficiency, and reliability, ensuring your needs are met with precision and unmatched service.



SUPERIOR PRODUCTS

Each product is developed to improve the way operators are serving food and beverages.



TESTED TO ENSURE QUALITY

In-house quality department meticulously tests each new product so that it meets your standards.



DELIVERED WITH CARE

Over 1,800 products warehoused on site and guaranteed to ship within 48 hours.

2025

NEW & FEATURED

Flame Free™ Thermo Urn™ 08

Square Infusion Dispenser 26

Fancy Feet Dispenser Bases 31

VersaVac Bottles 46

Tabletop Trash Cans 50

Tray-Pods 54

ErgoServ® Commercial by Service Ideas 78

Fiesta Solutions 146

Modern Edge Trays 157

Mod18 Deco Collection 170





CONTENTS

08 BUFFET

Coffee Urns & Gravity Pots 08-23

Cold Beverage Dispensers 24-39

Buffet Accessories 40-43

Non-Beverage Buffet 44-51



52 AIRPOTS

Insulated Airpots 52-65

Airpot Cover-ups 66-67

Airpot Displays 68-73

ErgoServ® Commercial 74-75





76 SERVERS

ErgoServ® Commercial 76-79

Elite Servers 80-91

Essential Servers & Creamers 92-102

Carafe Accessories 103

Brew-Thru & Decanters 104-107

Classic Servers 108-121

Stainless Water Pitchers 122-127

Plastic Water Pitchers 128-131

Specialty Coffee Supplies 132-135

Tea Supplies 136-141



142 TABLETOP

Insulated Platters 142-145

Fiesta Serveware and Skillets 146-147

Table Service Lights 154

Bar & Serving Trays 156-167

Mod18 Steelworks 166-173

Baskets 174-175

Bar & Wine 176-181

Coffee Accessories 182-183

Table Accessories 184-189



CUSTOMIZATION

190

SI COMPONENTS™

191

THE ORIGINAL

FLAME FREE™ THERMO-URN™



Introduced in 2010, the Flame Free™ Thermo-Urn™ is a Service Ideas exclusive product, engineered to achieve true vacuum insulation that provides 6+ hours of heat retention with no external heat source. This economical design significantly reduces labor and supply costs and has the potential to save you hundreds of dollars a year. You could receive a return on your investment within a matter of months! Furthermore, without the need for direct heat, your coffee will taste fresh until the last cup is poured. Choose from over 150 lid, legs, and finish combinations.

- Vacuum insulated body provides 6+ hours of heat retention
- Foam insulated lid with air tight gasket seals in the heat
- Interior splash guard reduces mess and injury while brewing and transporting
- Heavy duty stainless steel NSF listed spigot is safe for commercial use
- Lightweight yet heavy-duty legs attach securely to the base

Replacement parts: lid, lid knob, lid gasket, splash guard, handles, spigot, base, wrench, bolt, gaskets.





**TRIED.
TESTED.
PROVEN.**

Over 20,000 urns sold.

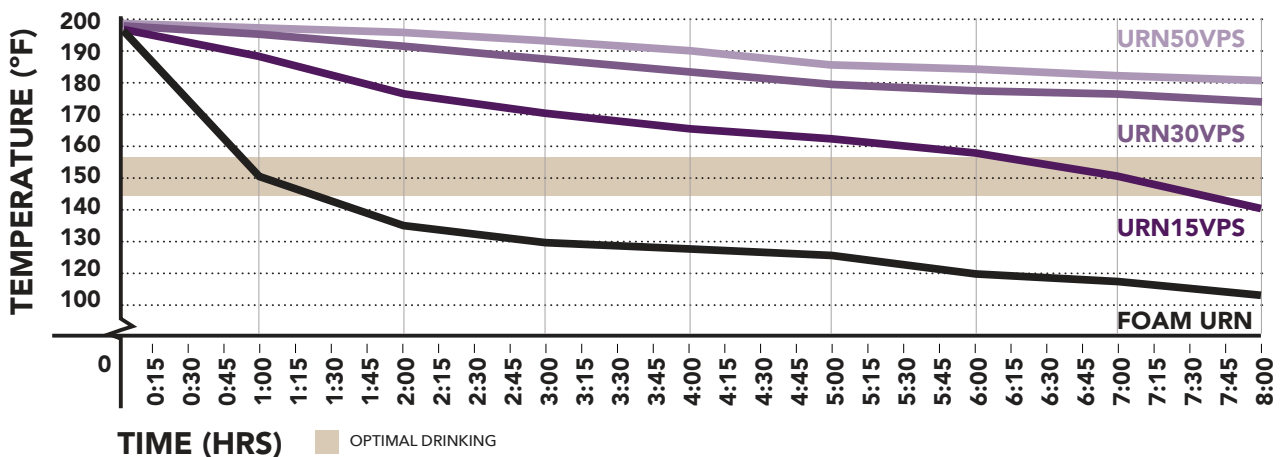
Since Service Ideas revolutionized the industry with the introduction of the first-ever vacuum insulated urn in 2010, this innovative product has become a staple in beverage service settings worldwide. Designed to deliver exceptional insulation and durability, it quickly gained popularity among foodservice professionals, resulting in over 20,000 units sold to date. Its success is a testament to its unmatched ability to maintain beverage temperatures for extended periods, reduce energy consumption, and enhance user convenience—cementing Service Ideas' reputation as a leader in beverage service innovation.

Fuel Savings Calculator:

	Sample Data	Calculate:
Average Cost Per Can of Fuel	<input type="text" value="\$2.18"/>	\$2.18
# of Urns Used	<input type="text" value="3"/>	x 3 urns
# of Cans/Urns each Event	<input type="text" value="3"/>	x 3 can/urn
# of Events Per Month	<input type="text" value="10"/>	x 10 events
	<hr/>	
	<input type="text" value="\$196.02"/>	Total Monthly Savings
	<input type="text" value="12"/>	x 12 months
	<hr/>	
	<input type="text" value="\$2354.40"/>	Total Yearly Savings

The Thermo-Urn difference.

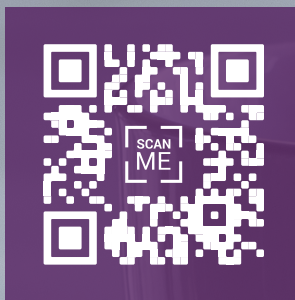
The Flame Free™ Thermo-Urn™ uses vacuum insulation to create a sealed airless space between its walls, keeping coffee hot for hours without external heat sources. Unlike foam insulation, which relies on solid materials and allows quicker heat loss, vacuum insulation ensures superior temperature retention.





NSF Listed Spigot

INTERACTIVE
URN BUILDER



FIND YOUR PERFECT URN

LID STYLES

Choose from three insulated lid styles:



Domed



Flat



Classic

BODY FINISHES

Choose from brushed or polished, three pvd metallics, and two powder coated finishes:



Brushed
Stainless



Polished
Stainless



Vintage
Gold
(PVD)



Rose
Gold
(PVD)



Black
Onyx
(PVD)



Black
(Powder Coat)



White
(Powder Coat)

LEG STYLES

Choose from three leg styles:



Modern



Regal



Round

MODERN LEGS



MODERN + DOMED LID

1.5 Gallon (192 oz) | 12.5" X 12" X 22.5"

- URN15VBSMD Brushed Stainless
- URN15VPSMD Polished Stainless
- URN15VVGMD Vintage Gold
- URN15VRGMD Rose Gold
- URN15VBXMD Black Onyx

3 Gallon (384 oz) | 14" X 13.5" X 26"

- URN30VBSMD Brushed Stainless
- URN30VPSMD Polished Stainless
- URN30VVGMD Vintage Gold
- URN30VRGMD Rose Gold
- URN30VBXMD Black Onyx
- URN30VWHMDDMP White PC
- URN30VBLMDDMP Black PC

5 Gallon (640 oz) | 16" X 15.5" X 29"

- URN50VBSMD Brushed Stainless
- URN50VPSMD Polished Stainless
- URN50VVGMD Vintage Gold
- URN50VRGMD Rose Gold
- URN50VBXMD Black Onyx



MODERN + FLAT LID

1.5 Gallon (192 oz) | 12.5" X 12.5" X 21.25"

- URN15VBSMDFL Brushed Stainless
- URN15VPSMDFL Polished Stainless
- URN15VVGMDFL Vintage Gold
- URN15VRGMDFL Rose Gold
- URN15VBXMDFL Black Onyx

3 Gallon (384 oz) | 14" X 13.5" X 24.5"

- URN30VBSMDFL Brushed Stainless
- URN30VPSMDFL Polished Stainless
- URN30VVGMDFL Vintage Gold
- URN30VRGMDFL Rose Gold
- URN30VBXMDFL Black Onyx
- URN30VWHMDFL White PC
- URN30VBLMDFL Black PC

5 Gallon (640 oz) | 16" X 15.5" X 27.75"

- URN50VBSMDFL Brushed Stainless
- URN50VPSMDFL Polished Stainless
- URN50VVGMDFL Vintage Gold
- URN50VRGMDFL Rose Gold
- URN50VBXMDFL Black Onyx



MODERN + CLASSIC LID

1.5 Gallon (192 oz) | 12.5" X 12.5" X 21.25"

- URN15VBSMDCL Brushed Stainless
- URN15VPSMDCL Polished Stainless
- URN15VVGMDCL Vintage Gold
- URN15VRGMDCL Rose Gold
- URN15VBXMDCL Black Onyx

3 Gallon (384 oz) | 14" X 13.5" X 24.75"

- URN30VBSMDCL Brushed Stainless
- URN30VPSMDCL Polished Stainless
- URN30VVGMDCL Vintage Gold
- URN30VRGMDCL Rose Gold
- URN30VBXMDCL Black Onyx
- URN30VWHMDCL White PC
- URN30VBLMDCL Black PC

5 Gallon (640 oz) | 16" X 15.5" X 27.75"

- URN50VBSMDCL Brushed Stainless
- URN50VPSMDCL Polished Stainless
- URN50VVGMDCL Vintage Gold
- URN50VRGMDCL Rose Gold
- URN50VBXMDCL Black Onyx

Add "HF" to the end of any of our beverage dispenser product codes to make it hands-free! Spigots also sold separately.

REGAL LEGS



REGAL + DOMED LID

1.5 Gallon (192 oz) | 12.5" X 12" X 22.5"

- URN15VBSRG Brushed Stainless
- URN15VPSRG Polished Stainless
- URN15VVGRG Vintage Gold
- URN15VRGRG Rose Gold
- URN15VBXRG Black Onyx

3 Gallon (384 oz) | 14" X 13.5" X 26"

- URN30VBSRG Brushed Stainless
- URN30VPSRG Polished Stainless
- URN30VVGRG Vintage Gold
- URN30VRGRG Rose Gold
- URN30VBXRG Black Onyx
- URN30VWHRGDMP White PC
- URN30VBLRGDMP Black PC

5 Gallon (640 oz) | 16" X 15.5" X 29"

- URN50VBSRG Brushed Stainless
- URN50VPSRG Polished Stainless
- URN50VVGRG Vintage Gold
- URN50VRGRG Rose Gold
- URN50VBXRG Black Onyx



REGAL + FLAT LID

1.5 Gallon (192 oz) | 12.5" X 12.5" X 21.25"

- URN15VBSRGFL Brushed Stainless
- URN15VPSRGFL Polished Stainless
- URN15VVGRGFL Vintage Gold
- URN15VRGRGFL Rose Gold
- URN15VBXRGFL Black Onyx

3 Gallon (384 oz) | 14" X 13.5" X 24.5"

- URN30VBSRGFL Brushed Stainless
- URN30VPSRGFL Polished Stainless
- URN30VVGRGFL Vintage Gold
- URN30VRGRGFL Rose Gold
- URN30VBXRGFL Black Onyx
- URN30VWHRGFL White PC
- URN30VBLRGFL Black PC

5 Gallon (640 oz) | 16" X 15.5" X 27.75"

- URN50VBSRGFL Brushed Stainless
- URN50VPSRGFL Polished Stainless
- URN50VVGRGFL Vintage Gold
- URN50VRGRGFL Rose Gold
- URN50VBXRGFL Black Onyx



REGAL + CLASSIC LID

1.5 Gallon (192 oz) | 12.5" X 12.5" X 21.25"

- URN15VBSRGCL Brushed Stainless
- URN15VPSRGCL Polished Stainless
- URN15VVGRGCL Vintage Gold
- URN15VRGRGCL Rose Gold
- URN15VBXRGCL Black Onyx

3 Gallon (384 oz) | 14" X 13.5" X 24.75"

- URN30VBSRGCL Brushed Stainless
- URN30VPSRGCL Polished Stainless
- URN30VVGRGCL Vintage Gold
- URN30VRGRGCL Rose Gold
- URN30VBXRGCL Black Onyx
- URN30VWHRGCL White PC
- URN30VBLRGCL Black PC

5 Gallon (640 oz) | 16" X 15.5" X 27.75"

- URN50VBSRGCL Brushed Stainless
- URN50VPSRGCL Polished Stainless
- URN50VVGRGCL Vintage Gold
- URN50VRGRGCL Rose Gold
- URN50VBXRGCL Black Onyx

Add "HF" to the end of any of our beverage dispenser product codes to make it hands-free! Spigots also sold separately.

ROUND LEGS



ROUND + DOMED LID

1.5 Gallon (192 oz) | 12.5" X 12" X 22.5"

- URN15VBSRN Brushed Stainless
- URN15VPSRN Polished Stainless
- URN15VVGRN Vintage Gold
- URN15VRGRN Rose Gold
- URN15VBXRN Black Onyx

3 Gallon (384 oz) | 14" X 13.5" X 26"

- URN30VBSRN Brushed Stainless
- URN30VPSRN Polished Stainless
- URN30VVGRN Vintage Gold
- URN30VRGRN Rose Gold
- URN30VBXRN Black Onyx
- URN30VWHRNDMP White PC
- URN30VBLRNDMP Black PC

5 Gallon (640 oz) | 16" X 15.5" X 29"

- URN50VBSRN Brushed Stainless
- URN50VPSRN Polished Stainless
- URN50VVGRN Vintage Gold
- URN50VRGRN Rose Gold
- URN50VBXRN Black Onyx



ROUND + FLAT LID

1.5 Gallon (192 oz) | 12.5" X 12.5" X 21.25"

- URN15VBSRNFL Brushed Stainless
- URN15VPSRNFL Polished Stainless
- URN15VVGRNFL Vintage Gold
- URN15VRGRNFL Rose Gold
- URN15VBXRNFL Black Onyx

3 Gallon (384 oz) | 14" X 13.5" X 24.5"

- URN30VBSRNFL Brushed Stainless
- URN30VPSRNFL Polished Stainless
- URN30VVGRNFL Vintage Gold
- URN30VRGRNFL Rose Gold
- URN30VBXRNFL Black Onyx
- URN30VWHRNFL White PC
- URN30VBLRNFL Black PC

5 Gallon (640 oz) | 16" X 15.5" X 27.75"

- URN50VBSRNFL Brushed Stainless
- URN50VPSRNFL Polished Stainless
- URN50VVGRNFL Vintage Gold
- URN50VRGRNFL Rose Gold
- URN50VBXRNFL Black Onyx



ROUND + CLASSIC LID

1.5 Gallon (192 oz) | 12.5" X 12.5" X 21.25"

- URN15VBSRNCL Brushed Stainless
- URN15VPSRNCL Polished Stainless
- URN15VVGRNCL Vintage Gold
- URN15VRGRNCL Rose Gold
- URN15VBXRNCL Black Onyx

3 Gallon (384 oz) | 14" X 13.5" X 24.75"

- URN30VBSRNCL Brushed Stainless
- URN30VPSRNCL Polished Stainless
- URN30VVGRNCL Vintage Gold
- URN30VRGRNCL Rose Gold
- URN30VBXRNCL Black Onyx
- URN30VWHRNCL White PC
- URN30VBLRNCL Black PC

5 Gallon (640 oz) | 16" X 15.5" X 27.75"

- URN50VBSRNCL Brushed Stainless
- URN50VPSRNCL Polished Stainless
- URN50VVGRNCL Vintage Gold
- URN50VRGRNCL Rose Gold
- URN50VBXRNCL Black Onyx

Add "HF" to the end of any of our beverage dispenser product codes to make it hands-free! Spigots also sold separately.

THERMAL CONTAINERS



UNIVERSAL

Our Universal Thermal Containers offer an affordable solution to serving large-volume events. These insulated coffee dispensers feature a brew-thru lid, plastic handles, and a sight-glass to view content levels, all while keeping your beverages hot for up to six hours. We've enhanced the coffee dispensers to now have a sleek carry handle, locking faucet, and removable drip tray. New universal design fits under most brewers. Detachable base for easy transportation.



BRUSHED STAINLESS

1 Gallon (128oz) | 14.5" X 9" X 20.25"

■ GIU1GV2 Brushed Stainless

1.5 Gallon (192 oz) | 14.5" X 9" X 23"

■ GIU15GV2 Brushed Stainless

2 Gallon (256 oz) | 14" X 9.25" X 24.25"

■ GIU2GV2 Brushed Stainless



BLACK

1 Gallon (128oz) | 14.5" X 9" X 20.25"

■ GIU1GV2BLK Black

1.5 Gallon (192 oz) | 14.5" X 9" X 23"

■ GIU15GV2BLK Black

Replacement parts: lid funnel, sight glass kit, sight glass guard, locking and non-locking faucet, plastic stand, drip tray. Add "HF" to the end of any of our beverage dispenser product codes to make it hands-free! Spigots also sold separately.

SLIM LINE

The Slim Line Thermal Container offers a more space-saving solution to our line of large-capacity insulated coffee dispensers. Featuring a plastic handle that rotates down and a 3-pillar base with a narrow profile, requiring less counter space. Seamless stainless-steel body makes a great canvas for custom wraps. Detachable base fits under most brewers and is easy to transport.



1 Gallon (128 oz.)
13" X 8" X 21.75"
GIUSL1G
Brushed Stainless



1.5 Gallon (192 oz.)
13" X 8" X 21.75"
GIUSL15G
Brushed Stainless

Replacement parts: plastic lid, drip tray, spigot
Add "HF" to the end of any of our beverage dispenser product codes to make it hands-free! Spigots also sold separately.



Make it your own!

We can customize our thermal containers to be uniquely yours by wrapping them in your branding. Flip to page 190 for more information on how to customize Service Ideas products.

STAINLESS TEA URNS



SLIM

Slim Commercial Tea Urns, 6" and 6.5" wide, feature a space saving built-in handle, a drip tray in the lid, and direct brewing capability.

3.5 Gallon (448 oz.)

16.5" X 6" X 23"

■ ITSL35G
Brushed Stainless

5 Gallon (640 oz.)

19.75" X 7" X 21"

■ ITSL5GPL
Brushed Stainless

ROUND

Round Commercial Tea Urns have a leak-proof stainless body, rubber grip handles for easy transport, and a brew-thru plastic lid.

3 Gallon (384 oz.)

15.25" X 11.25" X 16.5"

■ ITS3GPL
Brushed Stainless

5 Gallon (640 oz.)

15.25" X 11.25" X 21.75"

■ ITS5GPL
Brushed Stainless

Replacement parts: plastic lid, drip tray, spigot.

Add "HF" to the end of any of our beverage dispenser product codes to make it hands-free! Spigots also sold separately.



CLEAR TEA URN

The Clear Tea Dispenser offers a fresh take on tea service with a BPA-free Tritan™ tank for glass-like clarity and strength that resists warping and staining. Hand grips make it easy to move, while its black base provides a stylish display. Enhance flavors with the optional infuser tube, which securely attaches to the lid for suspending fruits or herbs. A plastic brew stand accessory helps minimize splashing while brewing.



CLEAR TEA URN

3.5 Gallon (448oz)
15.25" X 6" X 23"

■ ITSLC35GBLINF Clear

Optional Brew Stand
13" X 5.75" X 10"

■ ITSLBASEBL Black Sintra Plastic



Replacement parts: lid, container, drip tray, base plate, spigot, brew stand, infuser tube.
Add "HF" to the end of any of our beverage dispenser product codes to make it hands-free! Spigots also sold separately.

SQUARE INFUSION DISPENSER

A commercial-grade dispenser for catering, foodservice, and events, featuring a unique flavor infusion wall for showcasing infused beverages with citrus, fruits, or herbs. The wall can be removed for serving plain water or juice. Its one-piece molded construction has rounded corners for easy cleaning while maintaining a square shape. Includes a matching drip tray, polished stainless steel spigot, and compact storage with the base fitting inside the clear plastic body. NSF-listed for safe commercial use.



1.5 Gallon (230 oz.) | 11.25" X 8" X 19.75"

■ SCD15SS Brushed Stainless



3 Gallon (384 oz.) | 11.25" X 9.75" X 22.5"

■ SCD30SS Brushed Stainless

Replacement parts: lid, stainless spigot, Tritan™ container, infuser wall, drip tray.
Add "HF" to the end of any of our beverage dispenser product codes to make it hands-free! Spigots also sold separately.

Square shape, infused taste.





BASE & LID FINISHES

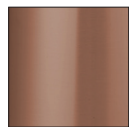
Choose from classic brushed, three pvd metallics, and four hydro-dipped finishes:



Brushed
Stainless



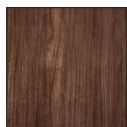
Vintage
Gold
(PVD)



Rose
Gold
(PVD)



Black Onyx
(PVD)



Dark Wood
(Hydro Dip)



Light
Wood
(Hydro Dip)



White
Marble
(Hydro Dip)



Travertine
Marble
(Hydro Dip)

DOUBLE WALL COLD BEVERAGE DISPENSER

Our Double Wall Cold Beverage Dispenser completely eliminates sweating and condensation. The container is built from two pieces, making it extremely easy to clean for safe use in commercial applications. The container is constructed of BPA-free Tritan™ plastic and comes with a stainless-steel base, lid, and spigot.



CLASSIC BRUSHED

3 Gallon (384 oz)
13" X 11.25" X 24.5"

■ CBDDW3GSS Brushed Stainless

METALLIC ELEMENTS

3 Gallon (384 oz)
13" X 11.25" X 24.5"

■ CBDDW3GSSVG Vintage Gold
■ CBDDW3GSSRG Rose Gold
■ CBDDW3GSSBX Black Onyx

NATURAL ELEMENTS

3 Gallon (384 oz)
13" X 11.25" X 24.5"

■ CBDDW3GSSDW Dark Wood
■ CBDDW3GSSLW Light Wood
■ CBDDW3GSSWM White Marble
■ CBDDW3GSSMB Travertine Marble

Replacement parts: lid, stainless spigot, Tritan™ container, ice tube, infuser tube.
Add "HF" to the end of any of our beverage dispenser product codes to make it hands-free! Spigots also sold separately.

DOUBLE WALL FANCY FEET



Stylish dispensers to
complement your urns!

MATCH YOUR URNS, ELEVATE YOUR STYLE!

Choose the perfect style for your hosting needs with our Double Wall Beverage Dispenser, featuring Modern, Regal, and Round leg designs to match your aesthetic—and our urns! Its durable double-wall construction keeps beverages at the ideal temperature without condensation, while the clear Tritan™ walls and infusion tube beautifully display your drinks.



MODERN LEGS

3 Gallon (384oz)
13" X 11.25" X 24.5"

■ CBDDW3GMD Polished
Stainless



REGAL LEGS

3 Gallon (384oz)
13" X 11.25" X 24.5"

■ CBDDW3GRG Polished
Stainless



ROUND LEGS

3 Gallon (384oz)
13" X 11.25" X 24.5"

■ CBDDW3GRN Polished
Stainless

Just the parts.

URN15VLEGMD Modern Legs
URN15VLEGRG Regal Legs
URN15VLEGRD Round Legs
CBDDWADPT Leg Adapter
CBDDWADPTSET Container and Lid Kit

Replacement parts: lid, legs, stainless spigot, Tritan™ container, ice tube, infuser tube.
Add "HF" to the end of any of our beverage dispenser product codes to make it hands-free! Spigots also sold separately.

ELITE COLD BEVERAGE

Our Elite Stainless Steel Cold Beverage Dispensers are constructed of high-quality stainless steel and BPA-free Tritan™ plastic. Each dispenser includes our new SSSPIGPS polished stainless steel spigot, adding an extra element of sophistication. Available in traditional brushed stainless steel, as well as four metallic finishes and four natural hydro-dipped patterns.



METALLIC ELEMENTS

3 Gallon (384oz) | 13" X 10.75" X 22.5"

- CBDRT3DTSS Dark Tungsten
- CBDRT3VGSS Vintage Gold
- CBDRT3RGSS Rose Gold
- CBDRT3BXSS Black Onyx



NATURAL ELEMENTS

3 Gallon (384oz) | 13" X 11.25" X 22.5"

- CBDRT3DWSS Dark Wood
- CBDRT3LWSS Light Wood
- CBDRT3WMSS White Marble
- CBDRT3MBSS Travertine Marble

Replacement parts: lid, stainless spigot, Tritan™ container, ice tube, infuser tube.
Add "HF" to the end of any of our beverage dispenser product codes to make it hands-free! Spigots also sold separately.





In a class of
it's own.

CLASSIC BRUSHED

3 Gallon (384oz)
13" X 10.75" X 22.5"

■ CBDRT3BSSS
Brushed Stainless

5 Gallon (640oz)
15" X 14" X 22.5"

■ CBDRT5BSSS
Brushed Stainless

ESSENTIAL COLD BEVERAGE

The Essential Cold Beverage Dispensers from Service Ideas combine style and functionality, offering sleek design, durable construction, and practical features for both casual and upscale settings.



ESSENTIAL ROUND

3 Gallon (384 oz.) | 13" X 10.75" X 22.5"

■ CBDRT3SS Brushed Stainless

5 Gallon (640 oz.) | 15" X 14" X 22.5"

■ CBDRT5SS Brushed Stainless



ESSENTIAL RECTANGLE

3 Gallon (384 oz.) | 13" X 10.75" X 22.5"

■ CBDRT3SS Brushed Stainless

Replacement parts: lid, plastic spigot, Tritan™ container, ice tube, infuser tube, drip tray, ice core.
Add "HF" to the end of any of our beverage dispenser product codes to make it hands-free! Spigots also sold separately.



A must have beverage dispenser.

The Essential Cold Beverage Dispensers from Service Ideas combine sleek design, durability, and versatility for any setting. The round model features a durable BPA-free body, stainless steel accents, and a removable infuser tube for drink customization, with all parts nesting for easy storage. The rectangular version adds an ice tube for cooling without dilution and saves space with its 8.5" width, sharing the same premium materials and standards.

CLASSIC COLD BEVERAGE

The Classic Plastic Cold Beverage Dispensers from Service Ideas deliver a perfect blend of lightweight durability and timeless functionality, featuring a sleek all-plastic design that suits both casual and professional environments.



CLASSIC ROUND

3 Gallon (384 oz.) | 12.25" X 11.5" X 21.75"

■ CBDRP3BL Black/Opaque



CLASSIC RECTANGLE

3 Gallon (384 oz.) | 18.5" X 8.5" X 20.25"

■ CBDRP3BLK Black/Opaque


Replacement parts: lid, plastic spigot, acrylic container, polypropylene container, ice tube, infuser tube.
Add "HF" to the end of any of our beverage dispenser product codes to make it hands-free! Spigots also sold separately.





Keep it classic.

Our Classic Cold Beverage Dispensers come in an all-plastic construction, providing a more economical option to the popular stainless-steel version. The dispenser includes an infuser tube for easy drink customization. Add the optional ice tube with no perforation to cool without diluting. Ice tube included with the rectangular dispenser, sold separately for the round. Everything can be stored in the clear acrylic plastic body of the unit when not in use.



COLD BREW 'N' SERV™ SYSTEM

Cold Brew Profit Calculator: FOR 3 GALLONS OF COLD BREW COFFEE

Total Costs: \$45

Coffee Cost: \$15 per pound

Coffee Used: 3 pounds

Revenue Potential: \$980 to \$1,344

Selling Price: \$5–7 per drink

Total Servings: 192 servings

Yield: 3 gallons (384 oz)

Serving Size: 2 oz cold brew concentrate

Gross Profit Calculation: \$915 to \$1,299

Revenue minus total costs

ALL-IN-ONE

COLD BREW MAKER AND DISPENSER.

Improve efficiency and enhance your cold brew presentation with the Cold Brew 'N' Serv™ System. It includes a simple yet innovative brew basket that turns the Rectangle Cold Beverage Dispenser into an all-in-one cold brew coffee maker and dispenser, making cold brew more efficient, more sanitary, and more appealing. Easy-to-use brew basket with minimal handling for sanitary and mess-free brewing and serving.



COMPLETE BREWER AND DISPENSER SYSTEM

3 Gallon (384 oz.)
17.5" X 8.25" X 20.5"

■ CBNS3SS
Brushed Stainless Dispenser
Black Plastic Basket

Just the parts.



3 lbs. Capacity
13.75" X 6" X 6.75"
CBNS3BSKT
Black Plastic



3 Gallon (384 oz.)
17.5" X 8" X 11.25"
CBDTCONTKIT
Clear Tritan™ Plastic

Replacement parts: brew basket, brew basket lid, brew basket handles, dispenser container, spigot.
Add "HF" to the end of any of our beverage dispenser product codes to make it hands-free! Spigots also sold separately.



LASER-CUT ID TENTS



1C-BF-___-MOD
3" X 1.75" X 1.5"



SANITATION: Cleaned, No Seating, Please Use Clean Cup, Sanitized
HOT BEVERAGES: House, Cider, Cocoa, Coffee, Decaf, Hot Water, Tea
COLD BEVERAGES: Apple, Cranberry, Iced Tea, Grape, Lemonade, Orange, Pineapple, Tomato, Water
DAIRY AND ALTERNATIVES: Almond Milk, 2% Milk, Coconut Milk, Cream, Dairy Free, Half & Half, Milk, Skim Milk, Soy Milk, Whole Milk
MISCELLANEOUS: Caution Hot Surface, Cold, Gluten Free, Hot, Nuts, Reserved, Sugar Free, Sweet, Unsweet, Vegan, Vegetarian

Don't see what you need? Make your own tents! Custom order with an MOQ of 70. Call customer service for more information at 1-800-328-4493.

LASER-CUT ID SIGNS



Brushed Stainless

1C-ST-___-SIGN
VAR X 1" X 1"



Vintage Gold

1C-ST-___-SIGN-VG
VAR X 1" X 1"



Rose Gold

1C-ST-___-SIGN-RG
VAR X 1" X 1"



Black Onyx

1C-ST-___-SIGN-BX
VAR X 1" X 1"



FLAVORS: Coffee,
Cream, Decaf, Milk,
Reserved, Skim, Tea,
Water, Almond, Oat,
Whole

FLAVORS: Coffee,
Cream, Decaf, Milk,
Reserved, Skim, Tea,
Water, Oat

FLAVORS: Coffee,
Cream, Decaf, Milk,
Reserved, Skim, Tea,
Water, Oat

FLAVORS: Coffee,
Cream, Decaf, Milk,
Reserved, Skim, Tea,
Water, Oat

Don't see what you need? Make your own tents! Custom order with an MOQ of 36. Call customer service for more information at 1-800-328-4493.

STAINLESS DRIP TRAYS



Our two-piece stainless steel coffee drip trays work great as an accessory to our Round Cold Beverage Dispensers or as a coaster for water pitchers. Use to keep your buffet and counter-top clean from coffee and other liquids that drip from your large beverage dispensers. Two-piece design is dishwasher safe and easy to clean. Available in round and square shapes.



Round Drip Tray 6" X 6" X 1.25"

- DT6BS Brushed Stainless
- DT6BSDT Dark Tungsten
- DT6BSVG Vintage Gold
- DT6BSRG Rose Gold
- DT6BSBX Black Onyx

Square Drip Tray 6" X 6" X 1.25"

- DTSQ6SS Brushed Stainless

PLASTIC DRIP TRAYS



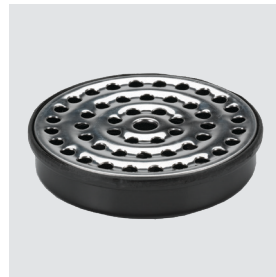
Our durable plastic drip trays are perfect for pairing with airpots, creamers, beverage dispensers. The Octagon Drip Tray and Small Round Drip Tray are designed to catch coffee drips and other liquids, keeping your buffet or countertop clean and tidy. Whether used for beverage stations or as coasters, these trays offer a practical and stylish solution for maintaining a professional service area.



Octagon Drip Tray

4.25" X 4.25" X 1"

■ DT45
Black Plastic



Small Round Drip Tray

4" X 4" X 1"

▣ DT4BLSS
Black and Stainless





BEYOND BEVERAGES

INNOVATIVE SOLUTIONS FOR BUFFET DISPLAYS

Traditionally known for exceptional beverage service, Service Ideas now expands into buffet foodservice with a fresh line of innovative non-beverage essentials. These thoughtfully designed items bring unmatched functionality and style to your buffet presentations. From **vacuum-insulated bottles** that keep sauces and dressings at the ideal temperature for hours, to **collapsible risers** that transform trays into stunning, multi-level food displays, these tools are crafted to enhance efficiency and elevate visual appeal. The collection also includes sleek **tabletop trash cans**, perfect for keeping buffet displays tidy and clutter-free. Each product reflects our commitment to quality and innovation, ensuring an enhanced dining experience for guests while making setup and maintenance effortless for operators.

VERSAVAC BOTTLE

The VersaVac Bottle keeps your culinary creations cool and fresh on non-refrigerated buffet counters. Its vacuum-insulated design maintains the perfect temperature for condiments and sauces. The Twist Seal Lid is great for food prep and even shaking up poolside cocktails, while the Vented Cruet Pour Lid handles vinaigrettes and juices. The Small Pour Lid suits oils and dressings, and the Large Pour Lid ensures spill-free pouring for thicker sauces and soups.



0.7 Liter (23.7 oz) | 2" X 2" X 5.5"

WV07SSCR Vented Cruet Pour
WV07SSSM Small Pour
WV07SSLG Large Pour
WV07SSTS Twist Seal



1 Liter (33.8 oz) | 2" X 2" X 5.5"

WV10SSCR Vented Cruet Pour
WV10SSSM Small Pour
WV10SSLG Large Pour
WV10SSTS Twist Seal

Replacement parts: cruet pour lid, small pour lid, large pour lid, twist seal lid, 0.7 liter bottle, 1 liter bottle.

Vacuum insulated
versatility.



Vented Cruet Pour

Small Pour

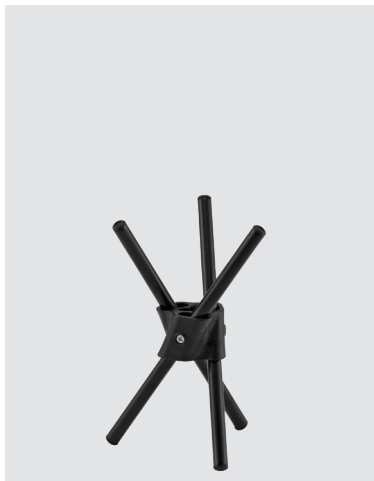
Large Pour

Twist Seal



TRAY-POD COLLAPSIBLE RISER SOLUTION

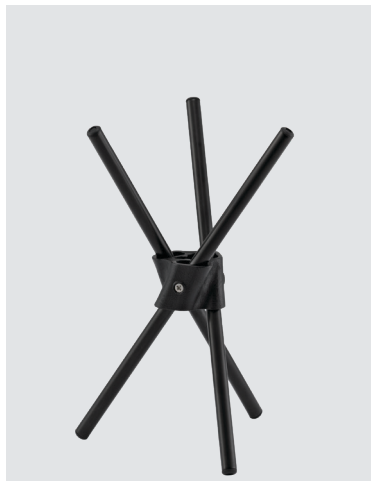
The Tray-Pod Collapsible Riser offers a space-saving, functional solution for elevating foodservice displays. Available in Small, Medium, and Large sizes, it easily unfolds like a folding chair to create a stable riser for trays, enhancing buffet and table presentations. Its collapsible design allows for compact storage when not in use, while its sturdy construction ensures long-lasting durability. Ideal for both casual and formal events, the Tray-Pod Collapsible Riser is perfect for elevating your food display and impressing your guests.



Small | 6" X 1.75" X 1.75"

■ TRP6BL Black

(pair with a small tray of 11" dia. or less)



Medium | 8" X 1.75" X 1.75"

■ TRP8BL Black

(pair with a medium tray of 14" dia. or less)



Large | 10" X 1.75" X 1.75"

■ TRP10BL Black

(pair with a large tray of 16" dia. or less)

The Tray-Pod Riser's collapsible feature allows it to fold down into a compact rod for easy storage, saving valuable space. This quick and simple design ensures effortless setup and teardown, making it a practical solution for any event or display.



TABLETOP TRASH CAN



The Tabletop Trash Can offers a sleek, practical solution for waste disposal in commercial foodservice settings. Its compact 1.5-liter capacity discreetly handles small waste like stir sticks and sugar packets at buffets and coffee stations. The angled top allows easy, mess-free disposal while keeping trash hidden, and the removable lid ensures quick emptying. Dishwasher safe for easy cleanup.



Tabletop Trash Can

CLASSIC STAINLESS

1.5 Liter (50.7 oz) | 8" X 5.5" X 5.5"

■ TTR15BS Brushed Stainless

Get It In METALLIC ELEMENTS

Tabletop Trash Can

METALLIC ELEMENTS COLLECTION

Made from durable 18/8 stainless steel, each can showcases a brushed body paired with a polished lid, available in four captivating finishes: Brushed Stainless, Vintage Gold, Rose Gold, and Black Onyx, exuding timeless sophistication.

Swatches



VG RG BX

Size

1.5 Liter (50.7 oz)
8" X 5.5" X 5.5"



VG



TTR15BSVG
Vintage Gold

RG



TTR15BSRG
Rose Gold

BX



TTR15BSBX
Black Onyx

COLOR-ME SVAC

#1 IN SUSTAINABILITY

Bring a splash of color and sustainability to your beverage service with the Color Me SVAC stainless-lined airpot. Its innovative lid design is detachable from the collar, making full lid replacements and color changes effortless. This thoughtful feature extends the product's lifespan and minimizes waste—no need to discard the entire airpot due to a damaged lid near the handle or collar. Instead, a simple collar and lid swap restores your airpot, reducing environmental impact and saving money. Designed with a lever pump lid for smooth, efficient dispensing.

- **Heavy-duty zinc lever** dispenses with ease
- **Stainless vacuum insulated body** provides 4-6 hours of heat retention
- **Interchangeable lid design** detaches from the collar, allowing for full lid and collar replacements and color changes.



Replacement parts: lid (lever), lid collar, suction pipe, gasket.



COLOR- ME SVAC



ORIGINAL BRUSHED STAINLESS

2.2 Liter (74.4 oz) | 8.75" X 6.75" X 11.5"

- CTAL22BL Black, Lever Pump Lid
- CTAL22BLU Blue, Lever Pump Lid
- CTAL22BR Brown, Lever Pump Lid
- CTAL22GRN Green, Lever Pump Lid
- CTAL22OR Orange, Lever Pump Lid

2.5 Liter (84.5 oz) | 8.75" X 6.75" X 12.5"

- CTAL25BL Black, Lever Pump Lid
- CTAL25BLU Blue, Lever Pump Lid
- CTAL25BR Brown, Lever Pump Lid
- CTAL25GRN Green, Lever Pump Lid
- CTAL25OR Orange, Lever Pump Lid

3 Liter (101.4 oz) | 8.75" X 6.75" X 13.25"

- CTAL30BL Black, Lever Pump Lid
- CTAL30BLU Blue, Lever Pump Lid
- CTAL30BR Brown, Lever Pump Lid
- CTAL30GRN Green, Lever Pump Lid
- CTAL30OR Orange, Lever Pump Lid

3.7 Liter (125 oz) | 8.75" X 6.75" X 15"

- CTAL37BL Black, Lever Pump Lid
- CTAL37BLU Blue, Lever Pump Lid
- CTAL37BR Brown, Lever Pump Lid
- CTAL37GRN Green, Lever Pump Lid
- CTAL37OR Orange, Lever Pump Lid

Get It In METALLIC ELEMENTS

Color-Me-SVAC

METALLIC ELEMENTS COLLECTION

The 3-liter Color Me SVAC airpot is offered in the striking Metallic Elements finishes: Vintage Gold (VG), Rose Gold (RG), and Dark Tungsten (DT). Each finish is paired with a sleek black lid, adding a modern and stylish touch to any beverage service.

Swatches



VG RG DT

Size

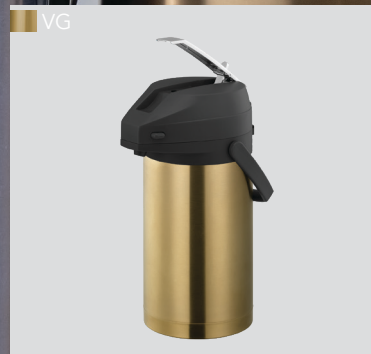
3 Liter (101.4 oz)
8.75" X 6.75" X 13.25"



CTAL30BLDT
Dark Tungsten, Lever Pump Lid



CTAL30BLRG
Rose Gold, Lever Pump Lid



CTAL30BLVG
Vintage Gold, Lever Pump Lid

ECO-AIR®

GLASS-LINED AIRPOTS

The Eco-Air® line was the first full airpot line Service Ideas incorporated in 1999. A variety of sizes and finishes are still available today.



#1 in heat retention

The Eco-Air® airpot features a durable exterior you can feel with a squeeze. Its glass vacuum insulation keeps coffee warm for 6–8 hours, perfect for extended holding. Choose between a classic push pump or an easy-to-use lever pump lid. All Eco-Air® airpots are NSF certified for safe use in commercial foodservice settings.

Swatches



BS BL J

Replacement parts: lid, (pump, lever, decaf), suction pipe, glass liner, gasket.



SMOOTH BODY

1.9 Liter (64.2 oz) | 8.25" X 6.25" X 15.25"

- ECAL19S Brushed Stainless, Lever Pump Lid
- ECA19S Brushed Stainless, Push Pump Lid

2.2 Liter (74.4 oz) | 8.5" X 6.75" X 16"

- ECAL22S Brushed Stainless, Lever Pump Lid
- ECA22S Brushed Stainless, Push Pump Lid

2.5 Liter (84.5 oz) | 8.25" X 6.25" X 17"

- ECAL25S Brushed Stainless, Lever Pump Lid
- ECA25S Brushed Stainless, Push Pump Lid

3 Liter (101.4 oz) | 8" X 6.25" X 18.25"

- ECAL30S Brushed Stainless, Lever Pump Lid
- ECA30S Brushed Stainless, Push Pump Lid



SIGHT GLASS BODY

2.2 Liter (74.4 oz) | 8.5" X 6.75" X 16"

- ECAL22SGY Brushed Stainless, Lever Pump Lid
- ECA22SGY Brushed Stainless, Push Pump Lid
- ECAL22PBLMATSG Black Plastic, Lever Pump Lid



BLACK PLASTIC BODY

2.2 Liter (74.4 oz) | 8.5" X 6.75" X 16"

- ECAL22PBLK Shiny Black Plastic, Lever Pump Lid
- ECA22PBL Shiny Black Plastic, Push Pump Lid
- ECAL22PBLMAT Matte Black Plastic, Lever Pump Lid
- ECA22PBLMAT Matte Black Plastic, Push Pump Lid



POLISHED JEWEL BODY

2.2 Liter (74.4 oz) | 8.25" X 6.25" X 15.5"

- ECAJL22S Polished Spiral Cut, Lever Pump Lid
- ECAJ22SS Polished Spiral Cut, Push Pump Lid

Select styles available with a stainless steel liner.
See product and price index for more information.

ECO-AIR® SLIM

STAINLESS-LINED AIRPOTS

Our stainless-lined Eco-Air® airpots are available in four sizes designed with a smaller profile. Their shorter height allows them to fit in smaller spaces like beverage carts and small counter tops. Stainless vacuum insulation keeps contents warm for 4–6 hours and is incredibly durable to last a lifetime. Choose between a classic push pump lid or easy-to-use lever pump lid.



PUSH PUMP LID

1.9 Liter (64.2 oz) | 8" X 6.25" X 11.75"

■ SECA19S Brushed Stainless, Push Pump Lid

2.2 Liter (74.4 oz) | 8" X 6.25" X 13"

■ SECA22S Brushed Stainless, Push Pump Lid

2.5 Liter (84.5 oz) | 8.25" X 6.25" X 14"

■ SECA25S Brushed Stainless, Push Pump Lid

3 Liter (101.4 oz) | 8" X 6.25" X 15.25"

■ SECA30S Brushed Stainless, Push Pump Lid



LEVER PUMP LID

1.9 Liter (64.2 oz) | 8" X 6.25" X 11.75"

■ SECAL19S Brushed Stainless, Lever Pump Lid

2.2 Liter (74.4 oz) | 7.5" X 5.5" X 13.5"

■ SECAL22S Brushed Stainless, Lever Pump Lid

2.5 Liter (84.5 oz) | 8" X 5.5" X 14.25"

■ SECAL25S Brushed Stainless, Lever Pump Lid

3 Liter (101.4 oz) | 8" X 5.5" X 15.75"

■ SECAL30S Brushed Stainless, Lever Pump Lid

Replacement parts: lid, (pump, lever, decaf), suction pipe, glass liner, gasket.



FOR *ECO-AIR*[®] AND *ECO-AIR*[®] SLIM AIRPOTS

Customize your Eco-Air[®] with one of these six lids. Use the black lids for full strength coffee and the orange for decaf.



Push Button
■ EPL22BL Black



Push Button
■ EPL22OR Orange



Push Button
■ EPLOR Black/Orange



Lever Lid
■ ELLBL Black



Lever Lid
■ ELLOR Orange



Lever Lid
■ ELLBLORT Black/Orange

SIGNA-AIR®

OUR SIGNATURE LEVER-LID AIRPOTS

The Signa-Air Airpots feature a stainless-steel exterior with glass or stainless vacuum insulation. Each comes with 4 flavor tabs (coffee, decaf, tea, and hot water) that hang below the spout or store on the lid. Durable and ideal for high-volume settings like convenience stores and hotel lobbies. Lever pump lid only.



STAINLESS LINED, BRUSHED EXTERIOR

2.2 Liter (74.4 oz) | 9" X 6.75" X 13.75"

■ ENALS22S Brushed Stainless, Lever Pump Lid

2.5 Liter (84.5 oz) | 9" X 6.75" X 14.5"

■ ENALS25S Brushed Stainless, Lever Pump Lid

3 Liter (101.4 oz) | 9" X 6.75" X 16"

■ ENALS30S Brushed Stainless, Lever Pump Lid

3.7 Liter (125 oz) | 9" X 6.75" X 18"

■ ENALS37SV2 Brushed Stainless, Lever Pump Lid



GLASS LINED, BRUSHED EXTERIOR

2.2 Liter (74.4 oz) | 8.75" X 6.5" X 15.25"

■ ENALG22S Brushed Stainless, Lever Pump Lid

2.5 Liter (84.5 oz) | 8.75" X 6.5" X 17"

■ ENALG25S Brushed Stainless, Lever Pump Lid

3 Liter (101.4 oz) | 8.75" X 6.5" X 18"

■ ENALG30S Brushed Stainless, Lever Pump Lid

Replacement parts: lid (black, chrome), suction pipe, glass liner, flavor indicator tabs.



**STAINLESS LINED,
BLACK PLASTIC EXTERIOR**

2.5 Liter (84.5 oz) | 9" X 6.75" X 15.25"

■ ENALS25PBLMAT Black Plastic, Lever Pump Lid



STAINLESS LINED, CHROME LID

2.2 Liter (74.4 oz) | 9" X 6.75" X 13.75"

■ ENALS22SCH Brushed Stainless, Lever Pump Lid

2.2 Liter (74.4 oz) | 9" X 6.75" X 13.75"

■ ENALS22SCHBL Soft-Touch* Black, Lever Pump Lid

2.2 Liter (74.4 oz) | 9" X 6.75" X 13.75"

□ ENALS22SCHWH Soft-Touch* White, Lever Pump Lid



*Soft-touch exterior repels water and fingerprints.

STEELVAC™ AIRPOTS

Featuring a brushed satin stainless-steel outer shell protecting the vacuum insulated liner inside.



STAINLESS LINED



GLASS LINED



STAINLESS LINED

2.5 Liter (84.5 oz) | 9.25" X 7.25" X 13.75"

- SSAL250 Brushed Stainless, Lever Pump Lid
- SSA250 Brushed Stainless, Push Pump Lid

3 Liter (101.4 oz) | 9.25" X 7.25" X 15.5"

- SSAL300 Brushed Stainless, Lever Pump Lid
- SSA300 Brushed Stainless, Push Pump Lid

3.75 Liter (126.8 oz) | 9.5" X 7.25" X 17.5"

- SSAL375 Brushed Stainless, Lever Pump Lid
- SSA375 Brushed Stainless, Push Pump Lid



GLASS LINED

2.2 Liter (74.4 oz) | 9.5" X 7.25" X 13.25"

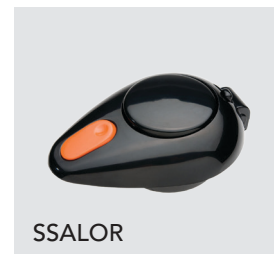
- GLAL220 Brushed Stainless, Lever Pump Lid
- GLAP220 Brushed Stainless, Push Pump Lid

2.5 Liter (84.5 oz) | 9.5" X 7.25" X 14.25"

- GLAL250 Brushed Stainless, Lever Pump Lid
- GLAP250 Brushed Stainless, Push Pump Lid

3 Liter (101.4 oz) | 9.5" X 7.25" X 15.5"

- GLAL300 Brushed Stainless, Lever Pump Lid
- GLAP300 Brushed Stainless, Push Pump Lid



Replacement parts: lid (lever and push), suction pipe, glass liner, gasket.



Commercial grade stainless steel exterior.

All of our SteelVac™ Airpots feature a stainless-steel outer shell for added durability in high-volume settings. A classic brushed satin finish helps reduce fingerprints and looks great in all settings and decors. Choose from glass lined (6-8 hour heat retention) or stainless lined (4-6 hour heat retention), and lever or pump lids. Pair with the plastic Roto Rack (page 71) to create a complete coffee display.

LOCK 'N' CARRY

STAINLESS-LINED AIRPOTS



Our Lock 'N' Carry Airpot features 18/8 stainless steel double wall construction with vacuum insulation to keep contents warm for 4–6 hours. The easy-to-use lid is designed with an innovative locking mechanism that allows you to protect yourself and your customers when transporting full units. This durable airpot is great for convenience stores, hotel lobbies, break rooms and other high-volume settings.





2.5 Liter (84.5 oz) | 9.25" X 7" X 14"

- SVAP25L Brushed Stainless, Lever Pump Lid
- SVAP25P Brushed Stainless, Push Pump Lid

3 Liter (101.4 oz) | 9.25" X 7.5" X 15"

- SVAP30L Brushed Stainless, Lever Pump Lid
- SVAP30P Brushed Stainless, Push Pump Lid

3.8 Liter (128.5 oz) | 9.25" X 7" X 16.75"

- SVAP38CPL Brushed Stainless, Lever Pump Lid

Open or locked, you choose!
The unique locking mechanism prevents spilling and helps coffee stay fresh longer.



Replacement parts: lid (lever and push), suction pipe, gasket.



AIRPOT COVER UPS

Our airpot cover-ups feature a universal lid design that fits both standard push pump or lever pump airpots. An adjustable disk in the base lets you raise the base up or down to fit your airpot perfectly. Available in a brushed (BS) or polished (PS) stainless finish. Pair with our Stainless Drip Trays on page 42 to tie the look together.

Replacement parts: lid, adjustable disk.

Dress 'em up!

**Fits 1.9-, 2.2-, and
2.5-liter Eco-Air®
Airpots**

11.5" X 9.5" X 17.75"

■ APC716BS
■ APC716PS

**Fits SteelVac™ GLA
and SSA Airpots**

13.25" X 11.25" X 19"

■ APC817BS
■ APC817PS



ID CHAINS

Our Stainless ID Chains are an elegant way to help customers know what you are serving. Available individually or as a variety pack with all three chains.



Hot Water
3.5" X 1.5" X 0.25"
IDCHHW



Coffee
3.5" X 1.5" X 0.25"
IDCHCF



Decaf
3.5" X 1.5" X 0.25"
IDCHDE

Variety Pack:
1 each Hot Water, Coffee, and Decaf
3.5" X 1.5" X 0.25"
IDVAR

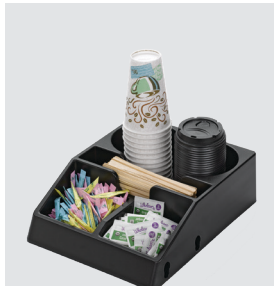
BUILD-YOUR-OWN AIRPOT RACK!

A TOTALLY MODULAR DISPLAY SYSTEM

Display is a snap with the Build-Your-Own Modular Airpot Station. This customizable display solution can be assembled in countless ways to create your perfect coffee station. Mix and match the 6 separate components as you wish!



Modules



**5-Compartment
Condiment Module**
13.5" X 11" X 4"
APC5V2



**2-Compartment
Condiment Module**
10.75" X 4.75" X 4"
APC2V2



**Airpot Holder & Drip
Tray Module, High**
12.25" X 8.25" X 8.75"
APDT1HBL



**Airpot Holder & Drip
Tray Module, Low**
12.25" X 8.75" X 2.5"
APDT1LBL



**Finishing End Caps
Set of 2**
APENDCAP



Drip Tray Insert
4" X 4" X 1"
DT4BLSS

Replacement parts: drip trays, end caps.

BUILD-YOUR-OWN AIRPOT RACK SYSTEM



Airpots sold separately.

Bundled kits

The Starter

APD2BL

(2)APDT1LBL, (1)APC2V2, (1)DT4BLSS, (1)APENDCAPS

The Trio

APD3BL

(3)APDT1LBL, (1)APC5V2, (1)APENDCAPS

The HiLo

APD4BL

(2)APDT1LBL, (2)APDT1HBL, (1)APC5V2, (2)APENDCAPS

The Two-Tier Trio

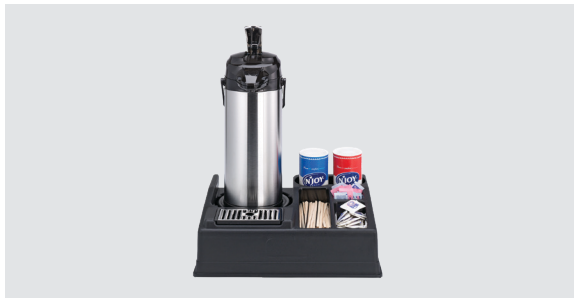
APD6BL

(3)APDT1LBL, (3)APDT1HBL, (1)APC2V2, (1)APC5V2

AIRPOT STATIONS

Airpot and condiment displays.

The Combo Airpot Stations fits 1–2 airpots, along with 5 compartments for standard coffee condiments. Adjustable disks in the stand to fit many sizes of airpots. Removable drip tray comes apart for easy cleaning. Great coffee station for offices, convenience stores and healthcare facilities.



Single Combo Airpot Station

17.5" X 13.25" X 5.75"
APLR15BL



Double Combo Airpot Station

26" X 13.25" X 5.75"
APLR25BL



Triple Plastic Roto-Rack®

26.25" X 22.75" X 4"
RRAP3BLK

Airpots sold separately.

Replacement parts: drip trays.



PLASTIC ROTO-RACK®

A lazy Susan for your airpots.

The Plastic Roto Rack® is a customer friendly, commercial grade display system, accommodating a wide array of airpot dimensions while maximizing counter space. This lazy susan rotation system allows you to display 3 airpots with a diameter of 7.5" or less and 3 additional compartments for cups, stir sticks and condiments. Includes a removable drip tray.

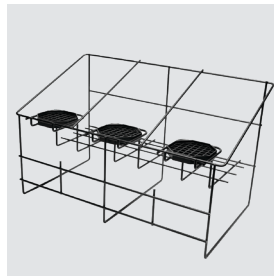
AIRPOT DISPLAYS

WIRE AIRPOT RACKS

When space is limited, wire racks help keep beverage service areas organized. The black wire racks from Service Ideas hold 2 or 3 airpots with a diameter of 7.5" or less. Constructed from powder coated stainless steel wire. Removable black drip trays for easy cleaning. Great airpot rack for offices, convenience stores and healthcare facilities. Try clipping the double and triple together to make a five-pot stand.



**Double Wire
Airpot Rack**
20.25" X 13" X 9.25"
APR2BLC



**Triple Wire
Airpot Rack**
23.75" X 12.75" X 14"
APR3BLC

Airpots sold separately.

Replacement parts: drip trays.

MODULAR AIRPOT STANDS

Our Modular Airpot Stands fit all airpots! They come in two separate pieces. Clip them together or use them separately to create a unique set-up that works best for you. Constructed from a lightweight and durable black styrene plastic. Removable grate for easy cleanup.



Single Airpot Stand
24.5" X 7.75" X 16.25"
APS1CBL



Double Airpot Stand
24.5" X 7.75" X 16"
APS2BL

Airpots sold separately.

CONDIMENT CADDIES

Store and organize a multitude of beverage condiments such as sugars, creamers, cups, lids, and sleeves in one of our Condiment Caddies. A great addition to any coffee station!



Octagon Caddy
9.25" X 7" X 17.25"
OCH7715C



8-Part Caddy
23" X 9.25" X 11"
CCPL8V2



6-Part Caddy
14.5" X 8.25" X 2.75"
SC1090



Airpot Drip Tray
12" X 8" X 2.25"
APS1

ERGOSERV® COMMERCIAL AIRPOTS

The ErgoServ® Commercial Airpots from Service Ideas feature an ergonomic comfort carry handle that reduces fatigue and a durable zinc die-cast lever in the lid that makes it easy to pump. The ErgoServ® Commercial line offers the perfect balance between practicality, durability, and style, making it a popular choice in the hospitality industry.



2.2 Liter (74.4 oz)

9" X 7" X 13"

■ 10-00180-008
Brushed Stainless
Lever Pump Lid



2.5 Liter (84.5 oz)

9" X 7" X 13.5"

■ 10-00181-000
Brushed Stainless
Lever Pump Lid



3 Liter (101.4 oz)

9" X 7" X 14.75"

■ 10-00189-000
Brushed Stainless
Lever Pump Lid



Replacement parts: lid (lever), suction pipe, gasket.



Green Lid
10-00597-000



Orange Lid
10-00597-002



Brown Lid
10-00597-003



Black Lid
10-00597-004





ERGOSERV® COMMERCIAL

BY SERVICE IDEAS

Service Ideas ErgoServ™ Commercial Beverage is a comprehensive line of beverage serviceware specifically designed for the commercial foodservice industry. The superior FerroStat insulation retains temperature for 4–6 hours. All items are NSF certified, ensuring food safety, and are backed by a solid 5-year vacuum insulation warranty, guaranteeing product longevity and performance.

- **Superior FerroStat insulation** keeps beverages at the ideal temperature for 4–6 hours.
- **NSF certified** for trusted food safety in commercial settings.
- **Backed by a 5-year vacuum insulation warranty** for long-lasting performance and reliability.



ERGOSERV® COMMERCIAL SERVERS



CARAFE

0.6 Liter (20 oz.) | 7" X 4.25" X 7.5"

10-00006-000

1 Liter (33.8 oz.) | 7.5" X 5.25" X 8.5"

10-00007-000

1.5 Liter (50.7 oz.) | 8" X 5.75" X 10.25"

10-00008-000



BREW-IN CARAFE

1.9 Liter (64.2 oz.) | 8.5" X 6.5" X 13"

10-00183-000 Short

1.9 Liter (64.2 oz.) | 8.75" X 6.75" X 13"

10-00185-000 Tall



PITCHER

1.9 Liter (64.2 oz.) | 8.75" X 5.5" X 10"

10-00009-010

Replacement parts: lid (brew-thru, trigger, decaf), colored trigger lids (blue, green, brown, orange).

ERGOSERV® COMMERCIAL CREAMER



The ErgoServ® Commercial Creamer is a classic choice for serving dairy or coffee. Designed with an NSF-listed lid and body, it easily disassembles for thorough cleaning, making it ideal for dairy service. Optional content indicator socks are available in Cream, Milk, Skim, and Soy for added convenience. Superior FerroStat insulation keeps beverages at the perfect temperature for 4–6 hours, while the ergonomic handle and no-drip spout ensure a smooth, controlled pour.



CREAMER

1 Liter (33.8 oz.) | 7" X 6.5" X 10.5"
10-00744-000

IDENTIFICATION SOCKS

Skim | Light Blue

■ 10-00209-001

Oat | Beige

■ 10-00209-020

Soy | Gray

■ 10-00209-004

Almond | Beige

■ 10-00209-016

Milk | Red

■ 10-00209-002

Lait | Red

■ 10-00209-006

Cream | Purple

■ 10-00209-003

Creme | Purple

■ 10-00209-005

Coconut | White

■ 10-00209-017



4 Pack Socks: Milk, Skim, Soy, Cream

10-00209-VAR4

Replacement parts: trigger lid, silicone sleeves.

Nicollet Series Carafe

Swatches



Sizes

0.6 Liter
1.0 Liter
1.5 Liter

Styles

Flip Top
Push Button



Dine in style with
**NICOLLET &
MARQUETTE**



Marquette Series Carafe

Swatches



Sizes

0.3 Liter
0.6 Liter
1.0 Liter
1.5 Liter
2.0 Liter

Styles

Flip Top
Push Button

These stainless-steel beauties are vacuum insulated to provide 4-6 hours of maximum heat retention for your coffee service. Shapely silhouettes give these servers an upscale feel, perfect for fine dining and catering elegant events.

Both servers come with a choice of push button or flip-top lid. Choose the push-button lid if you need a more spill-proof option to leave coffee at the table, or the flip-top lid for a more multi-purpose server, suitable for serving a variety of food and beverages including sauces, soups, syrups, creams, and coffees.

NICOLLET SERIES CARAFE

The tapered base of the Nicollet Carafe offers a slim profile with an elegant shape. It's available in three sizes and two lid options to suit a wide array of applications. Opt for the push-button lid for beverages and non-dairy applications, or select the flip-top lid for alternative uses such as sauces and creams. You can also choose from a wide selection 12 finishes to compliment your unique style.



PUSH-BUTTON LID

0.6 Liter (20 oz) | 6.25" X 4.25" X 7.5"

■ NIC06BSPB Brushed Stainless

1 Liter (33.8 oz) | 6" X 4.75" X 8.25"

- NIC10BSPB Brushed Stainless
- NIC10BSPBVG Vintage Gold
- NIC10BSPBRG Rose Gold
- NIC10BSPBDT Dark Tungsten
- NIC10BSPBBX Black Onyx

1.5 Liter (50.7 oz) | 6.25" X 5" X 10.75"

■ NIC15BSPB Brushed Stainless

FLIP-TOP LID

0.6 Liter (20 oz) | 6" X 4.5" X 7.25"

- NIC06BS Brushed Stainless
- NIC06PS Polished Stainless

1 Liter (33.8 oz) | 6" X 4.75" X 8.25"

- NIC10BS Brushed Stainless
- NIC10PS Polished Stainless
- NIC10BSDW Dark Wood
- NIC10BSLW Light Wood
- NIC10BSMB Travertine Marble
- NIC10BSWM White Marble
- NIC10BSGM Gray Marble
- NIC10BSLTH Italian Leather

1.5 Liter (50.7 oz) | 6.5" X 5" X 10.25"

- NIC15BS Brushed Stainless
- NIC15PS Polished Stainless

Replacement parts: stopper lid, push-button lid, decaf indicator tabs.



Push Button
METALLIC ELEMENTS



Flip Top
NATURAL ELEMENTS

(hand wash only)



MARQUETTE SERIES CARAFE

The Marquette Series Carafe will have your tables looking distinguished thanks to its elegant neck, stylish handle, and wide stately base. This server is versatile enough to suit a range of applications, with a flip-top lid for alternative uses like sauces and creams.



PUSH-BUTTON LID

1 Liter (33.8 oz) | 6" X 4.75" X 8.25"

- MAR10BSPB Brushed Stainless
- MAR10BSPBVG Vintage Gold
- MAR10BSPBRG Rose Gold
- MAR10BSPBDT Dark Tungsten
- MAR10BSPBBX Black Onyx

2 Liter (67.6 oz) | 6.5" X 5.75" X 11"

- MAR20BSPB Brushed Stainless



FLIP-TOP LID

0.3 Liter (10 oz) | 5.75" X 4.25" X 6"

- MAR03BS Brushed Stainless
- MAR03PS Polished Stainless

0.6 Liter (20 oz) | 6" X 4.5" X 6.5"

- MAR06BS Brushed Stainless
- MAR06PS Polished Stainless

1 Liter (33.8 oz) | 6.25" X 5" X 7.5"

- MAR10BS Brushed Stainless
- MAR10PS Polished Stainless

1.5 Liter (50.7 oz) | 6.5" X 5.5" X 9"

- MAR15BS Brushed Stainless
- MAR15PS Polished Stainless

2 Liter (67.6 oz) | 6.25" X 5.5" X 10.75"

- MAR20BS Brushed Stainless
- MAR20PS Polished Stainless

Replacement parts: stopper lid, push-button lid, decaf indicator tabs.



Push Button
METALLIC ELEMENTS



Custom
ETCHING

ALTUS CARAFE

The Altus Carafe is a sophisticated beverage server, defined by its sleek silhouette with a slender bottle neck and a wide, stable base. Its stainless steel vacuum insulation preserves the ideal temperature of coffee, tea, or other hot and cold beverages for 4-6 hours, ensuring a consistently perfect pour. NSF-listed for commercial use, it upholds high standards of quality and cleanability. Accented with a polished stainless steel lid and handle, the Altus Carafe seamlessly blends elegance and functionality, making it a standout choice for any professional setting.



FLIP-TOP LID

0.6 Liter (20 oz) | 5.75" X 4.25" X 7.75"

■ ALTU06BS Brushed Stainless

1 Liter (33.8 oz) | 5.75" X 4.5" X 10.25"

- ALTU10BS Brushed Stainless
- ALTU10BSVG Vintage Gold
- ALTU10BSRG Rose Gold
- ALTU10BSDT Dark Tungsten
- ALTU10BSBX Black Onyx

1.5 Liter (50.7 oz) | 6.25" X 5" X 11.25"

■ ALTU15BS Brushed Stainless

Replacement parts: stopper lid.





Get It In
**METALLIC
ELEMENTS**

Altus Carafe

**METALLIC ELEMENTS
COLLECTION**

The Altus Carafe is available in our stunning Metallic Elements finishes, offering both beauty and versatility. In the 1-liter size, choose from four striking options: vintage gold (VG), rose gold (RG), dark tungsten (DT), and black onyx (BX).

Swatches



DT VG RG BX

Size

1 Liter (33.8 oz)
5.75" X 4.5" X 10.25"

SMART CHOICE SERVER

This smart and stylish coffee carafe comes in four different sizes with an all-polished body, complete with a polished flip-top lid, an all-metal stopper, and ergonomic handle. Great for coffee, cream, and other hot or cold beverages.



0.3 Liter (10 oz.)
5.5" X 4.25" X 5.5"
SVSC03PS
Polished Stainless



0.6 Liter (20 oz.)
5.75" X 4.25" X 7.5"
SVSC06PS
Polished Stainless



1 Liter (33.8 oz.)
5.75" X 4.25" X 10.25"
SVSC10PS
Polished Stainless



1.3 Liter (44 oz.)
6" X 5" X 11"
SVSC13PS
Polished Stainless

Replacement parts: stopper lid.



SQUARE SERVER

The Stainless Square Server features a clean-pour spout, a flip-top stopper lid, and a unique square design. A thin handle makes it easy to carry multiple servers with one hand. Available in four sizes with a traditional brushed stainless finish.



0.4 Liter (13.5 oz.)
6" X 4" X 6.75"
SVSQ04BS
Brushed Stainless



0.7 Liter (23.7 oz.)
6.25" X 4.5" X 7.75"
SVSQ07BS
Brushed Stainless



1 Liter (33.8 oz.)
6.5" X 4.75" X 8.75"
SVSQ10BS
Brushed Stainless



1.5 Liter (50.7 oz.)
6.75" X 5.25" X 10"
SVSQ15BS
Brushed Stainless

Replacement parts: stopper lid.

CLASSY™ CARAFES

Pour with sophistication.

The Classy™ Carafe features a zinc-plated handle, collar, and lid, offering a more solid and durable design. Opt for the glass-vacuum insulated versions to extend heat retention to 6-8 hours and enhance coffee flavor for true coffee aficionados. Includes an optional decaf indicator sock made from orange silicone that easily slips on and off the push button lid. Available in a brushed (BS) or chrome (CH), or copper (CP) stainless finish.



GLASS LINED

0.6 Liter (20 oz) | 6.5" X 5" X 8.5"

- CJZ6BS Brushed Stainless
- CJZ6CH Chrome

1 Liter (33.8 oz) | 6.75" X 5.5" X 10"

- CJZ1BS Brushed Stainless
- CJZ1CP Brushed Copper
- CJZ1CH Chrome



STAINLESS LINED

1 Liter (33.8 oz) | 6.75" X 5.5" X 10"

- CJZS1BS Brushed Stainless
- CJZS1CP Brushed Copper
- CJZS1CH Chrome



Replacement parts: push-button lid, glass vacuum liner, decaf indicator sleeves.

A splash of color!

Classy™ Carafes

POWDER COATED EXTERIOR

The 1-liter size is also available in durable powder-coated finishes, offering a vibrant selection of blue (BLU), black (BLK), red (RED), and white (WHT) —with glass or stainless-lined interiors for bold style and reliable insulation.

Swatches



BLK BLU RED WHT

Size

1 Liter (33.8 oz)
6.75" X 5.5" X 10"

GLASS LINED

1 Liter (33.8 oz) | 6.75" X 5.5" X 10"

- CJZ1BLK Black
- CJZ1BLU Blue
- CJZ1RED Red
- CJZ1WHT Black



STAINLESS LINED

1 Liter (33.8 oz) | 6.75" X 5.5" X 10"

- CJZS1BLK Black
- CJZS1BLU Blue
- CJZS1RED Red
- CJZS1WHT Black



FLOW CONTROL CARAFE



The Flow Control Carafe features a patented adjustable rubber gasket, allowing precise control over liquid flow. Open wide for wait staff or slightly for self-serve use, ensuring portion control and spill prevention. Its brew-thru lid adds versatility for seamless brewer-to-table service.

Swatches



Sizes

- 0.6 Liter (20 oz)
- 1.2 Liter (40.5 oz)
- 1.6 Liter (54 oz)
- 2.0 Liter (67.6 oz)



Control the flow!

Patented lid design adjusts the flow to faster or slower

NSF-listed design makes it a great creamer choice dairy

Agion® coating suppresses bacteria growth

Stainless vacuum insulation retains heat for 4–6 hours



FLOW CONTROL CARAFE

0.6 Liter (20 oz) | 6.5" X 4.5" X 6.25"

- FCC06SS Brushed Stainless and Black
- FCC06SSBLU Brushed Stainless and Blue

1.2 Liter (40.5 oz) | 7" X 5" X 8.25"

- FCC12SS Brushed Stainless and Black

1.6 Liter (54 oz) | 6.75" X 5" X 9.75"

- FCC16SS Brushed Stainless and Black
- FCC16SSBLU Brushed Stainless and Blue

2 Liter (67.6 oz) | 6.75" X 5" X 11.5"

- FCC20SS Brushed Stainless and Black

LID OPTIONS



Flow Control Regular Black
FCCLBLK



Flow Control Decaf Orange
FCCLOR



Brew Thru Regular Black
FCCBTBLK



Brew Thru Decaf Orange
FCCBTOR

Replacement parts: flow control lid.

SLIM SERVER

The Slim Servers feature a push-button lid with a no-drip spout and stainless vacuum insulation for a temperature retention of 4–6 hours. The over-molded rubber handle creates an extra-comfortable grip when pouring. Boasting a small footprint and lightweight design, making this carafe ideal for room service.



SLIM SERVER

0.6 Liter (20 oz) | 6" X 4.25" X 7.75"

■ 83706 Brushed Stainless

1.0 Liter (33.8 oz) | 6" X 4.25" X 9.75"

■ 83710 Brushed Stainless

1.5 Liter (50.7 oz) | 6" X 4.75" X 11.5"

■ 83715 Brushed Stainless

Replacement parts: lid (regular, decaf).



STAINLESS TOUCH

The Stainless Touch Carafe features an unbreakable stainless liner with vacuum insulation, keeping drinks hot or cold for 4–6 hours. Its stay-clean lid pours beneath, not through, for a cleaner, mess-free serve. A decaf lid is available separately.



ELITE STAINLESS TOUCH, CHROME

0.6 Liter (20 oz) | 7" X 4.75" X 7.75"

■ LVP67 Polished Stainless, Chrome Lid

1 Liter (33.8 oz) | 7" X 4.75" X 8.5"

■ LVP1000 Polished Stainless, Chrome Lid

1.5 Liter (50.7 oz) | 7" X 4.75" X 10.25"

■ LVP1500 Polished Stainless, Chrome Lid

STAINLESS TOUCH, BLACK

0.6 Liter (20 oz) | 7" X 4.75" X 7.5"

■ KVP67 Brushed Stainless, Black Lid

1 Liter (33.8 oz) | 7" X 4.75" X 8.75"

■ KVP1000 Brushed Stainless, Black Lid

1.5 Liter (50.7 oz) | 7" X 4.75" X 10.25"

■ KVP1500 Brushed Stainless, Black Lid

1.9 Liter (64.2 oz) | 7.25" X 4.75" X 12.5"

■ KVP1900 Brushed Stainless, Black Lid

Replacement parts: lid (regular, decaf), gasket.

STEELVAC™ CREAMER

The SteelVac™ Creamer features an unbreakable stainless liner with vacuum insulation that retains hot or cold temperatures for 4–6 hours. Now with removable and interchangeable stainless-steel and footed black plastic bases. Designed with a screw top lid for easy cleanup and a curved handle for a comfortable pour. NSF listed for superior clean-ability and safety.



The
ultimate
creamer
carafe.



Replacement parts: lid, stainless base, footed plastic base.

STAINLESS STEEL

OR

FOOTED PLASTIC



STAINLESS STEEL BASE

0.7 Liter (23.7 oz) | 6" X 3.75" X 9"

- S2SN70 Black
- S2SN70WHT White

1 Liter (33.8 oz) | 5.75" X 3.75" X 11.25"

- S2SN100 Black
- S2SN100WHT White

DAIRY ETCHED

1 Liter (33.8 oz) | 5.75" X 3.75" X 11.25"

- S2SN1002PCTET Black, 2% Milk
- S2SN1002PCTETWHT White, 2% Milk
- S2SN100HHET Black, Half & Half
- S2SN100HHETWHT White, Half & Half
- S2SN100SMET Black, Skim Milk
- S2SN100SMETWHT White, Skim Milk
- S2SN100WHOLEET Black, Whole Milk
- S2SN100WHOLEETWHT White, Whole Milk

FOOTED PLASTIC BASE

0.7 Liter (23.7 oz) | 5.75" X 4.25" X 9.25"

- SSN70 Black

1 Liter (33.8 oz) | 5.75" X 1.25" X 11.5"

- SSN100 Black

DAIRY ETCHED

1 Liter (33.8 oz) | 5.75" X 4.25" X 11.5"

- SSN1002PCTET Black, 2% Milk
- SSN100HHET Black, Half & Half
- SSN100SMET Black, Skim Milk
- SSN100WHOLEET Black, Whole Milk

STEELVAC™ ESSENTIAL CARAFE

The SteelVac™ Essential Carafe features an unbreakable stainless liner with vacuum insulation that retains hot or cold temperatures for 4–6 hours. It works with a push-button lid or a brew-thru lid (FVPBTL) for a versatile brewer-to-table presentation. The push-button lid allows liquid to flow under, not through it, and can be easily taken apart for thorough cleaning. Three sizes available.



Seamless chamber vacuum
for a sleek exterior.



Replacement parts: lid (regular, decaf, brew-thru).

BRUSHED STAINLESS



1.2 Liter (40.6 oz)

7" X 5.5" X 8.25"

■ FVPC12 Brushed Stainless

1.5 Liter (50.7 oz)

7" X 5.5" X 9"

■ FVPC15 Brushed Stainless

2 Liter (67.7 oz)

7" X 5.5" X 9.75"

■ FVPC20 Brushed Stainless

DAIRY ETCHED

1.5 Liter (50.7 oz)

7" X 5.5" X 9"

- FVPC152PCTET 2% Milk
- FVPC15HALFET Half & Half
- FVPC15SKIMET Skim Milk
- FVPC15WHOLEET Whole Milk



STEELVAC™ BREW-IN CARAFE

For an insulated alternative to the classic clear decanter, try our Stainless Decanters for an insulated brewer-to-table presentation. Use the SHS19S with most low-profile brewers, and the SHS19T with tall airpot brewers.



1.9 Liter (64.2 oz) | 8.75" X 6.5" X 7.25"

■ SHS19S Brushed Stainless, **Short**

1.9 Liter (64.2 oz) | 7" X 5.25" X 11.5"

■ SHS19T Brushed Stainless, **Tall**



Replacement parts: brew-thru lid (regular, decaf).

STEELVAC™ SLIM CARAFE

The SteelVac™ Slim Carafe is built with a long trigger on the push button lid for easy, one-handed operation. The 2-liter size has a brew-thru lid and fits under most standard brewers.



0.6 Liter (20 oz) | 6.25" X 3.75" X 8"

■ SJ60SS Brushed Stainless

1 Liter (33.8 oz) | 6.5" X 3.75" X 10.5"

■ SJ10SS Brushed Stainless

2 Liter (67.7 oz) | 6.75" X 5" X 12"

■ SJ20SS Brushed Stainless

2 Liter (67.7 oz) | 6.5" X 5.25" X 11.5"

■ SJB20S Brushed Stainless, **Brew-Thru Lid**

Replacement parts: lid (regular, brew-thru).



PORTION CONTROL CARAFE

Adjustable lid for more control.

The Portion Control Carafe has a unique lid that lets you control portions with a twist of the lid. Set it to "LESS" for a light stream and more controlled pour, or "MORE" for a looser opening and faster pour.



Stainless Vacuum Insulated

PORTION CONTROL CARAFE

0.7 Liter (23.7 oz) | 5.5" X 3.75" X 9"

■ 700NK-N Brushed Stainless

1 Liter (33.8 oz) | 5.5" X 3.75" X 11"

■ 1000NK-N Brushed Stainless

Replacement parts: lid, gasket.

RUBBER FLAVOR BANDS

What's your flavor?



Flavor bands are great for differentiating creamers and are an easy alternative to custom printing or etching. Our Flavor ID Bands are designed for 4" diameter carafes, available in 7 colors and labels, and made with non-toxic rubber.



1 Flavor Band 3.5" X .75"

- FB2MILK
- FBALMONDMILK
- FBCREAM
- FBDECAF
- FBHALF&HALF
- FBHOTWATER
- FBNONFATMILK
- FBOATMILK
- FBREGULAR
- FBSKIM
- FBSEYMIK
- FBTEA

7 Pack Bands (1 Each: Cream, Half & Half, Hot Water, Skim Milk, Tea, Decaf) 3.5" X .75"

FBVARIETY

6 Pack Bands (2 Each: Cream, Half & Half, Skim) 3.5" X .75"

FBCOLDVAR

Customization available with an MOQ of 500.

BREW 'N' POUR® CARAFE

The Brew 'N' Pour® Carafe features stainless steel vacuum insulation, keeping coffee hot for 4–6 hours without a warmer. Brew directly into the carafe for a seamless transition from brewing to serving, ensuring convenience and exceptional coffee quality.



ORIGINAL LID

1.9 Liter (64.2 oz.) | 8.5" X 6.5" X 7"

- BNP19BL Brushed Stainless, Black Lid
- BNP19DL Brushed Stainless, Orange Lid



CLOCK LID

1.9 Liter (64.2 oz.) | 8.5" X 6.5" X 7"

- BNP19V4 Brushed Stainless, Black Lid
- BNP19ORV4 Brushed Stainless, Orange Lid



BREW 'N' POUR WIRE RACK

Wire Wrack | 13" X 7.5" X 7.5"

- BNPR2 Black

Replacement parts: lid (regular, decaf, clock).



From brewer to table.

Bring fresh coffee straight from brewer to table with the Brew 'N' Pour® Carafe, designed for compatibility with a variety of low-profile brewers. Select a regular or decaf lid, with or without an integrated clock timer. The clock lid allows you to set the time of your last brew, making it easy to ensure your coffee is fresh and giving your customers confidence in every pour. Hand wash clock lid.

CLASSIC COFFEE DECANTER



Bring hot coffee from brewer to table with the Clear Coffee Decanter. Its BPA-free Tritan® body offers glass-like clarity with durable plastic strength, while the stainless-steel base keeps coffee evenly warm. Compatible with most low-profile brewers, it includes a removable orange decaf sleeve for easy identification.



CLEAR COFFEE DECANTER

1.8 Liter (60.8 oz.)

8" X 6.25" X 7"

■ PCB18 Clear



Replacement parts: silicone sock.



The Brew-Thru Mini Carafe is ideal for small-batch brewing in commercial settings. Compatible with single-serve brewers, it holds two 12 oz cups and keeps coffee hot for 4-6 hours. Durable stainless vacuum insulation and a brew-thru lid ensure long-lasting performance and seamless service in busy environments.



BREW-THRU MINI CARAFE

0.7 Liter (23.7 oz.)

7.5" X 4.5" X 6.5"

■ BTS09 Brushed Stainless



Replacement parts: brew-thru lid.



BLAST

FROM THE PAST

It all started in 1956 with the Thermo-Serv® Carafe, the first-ever insulated pot that set the standard for coffee service. Over the years, our foam-lined collection grew to include the ultra-durable New Generation Server and the versatile Eco-Serv™ Carafe. These iconic body styles have become staples in coffee service and remain as relevant today as ever, trusted in restaurants, healthcare settings, and beyond for their timeless design, exceptional functionality, and lasting durability.

Eco-Serv™

Thermo-Serv[®]

The original insulated carafe.



THERMO-SERV® CARAFE

An industry staple since 1956, the Thermo-Serv® Server is a classically designed carafe that features a durable ABS plastic shell with double-wall foam insulation. Ideal for serving hot coffee and water at the perfect temperature for 2–3 hours. Sonic welded seams create an ultra-smooth body and metallic flakes give the exterior a touch of sparkle.



FLIP-TOP LID

0.6 Liter (20 oz) | 5.75" X 4.75" X 7.5"

- TS501BL Metallic Black
- TS501CB Metallic Copper
- TS501KB Metallic Gold

1 Liter (33.8 oz) | 6.25" X 5" X 9"

- TS101BL Metallic Black
- TS101CB Metallic Copper
- TS101KB Metallic Gold

2 Liter (67.6 oz) | 7.25" X 6" X 10.5"

- TS411BL Metallic Black
- TS411CB Metallic Copper
- TS411KB Metallic Gold



PUSH-BUTTON LID

0.6 Liter (20 oz) | 6" X 4.5" X 7.75"

- PB501BL Metallic Black
- PB501CB Metallic Copper
- PB501MG Metallic Gray

1 Liter (33.8 oz) | 6.25" X 5.25" X 9.25"

- PB101BL Metallic Black
- PB101CB Metallic Copper
- PB101MG Metallic Gray

2 Liter (67.6 oz) | 7.25" X 6" X 11"

- PB421BL Metallic Black
- PB421CB Metallic Copper

Replacement parts: push button lid (regular, decaf), flip top lid.

NEW GENERATION® SERVERS

The New Generation Server has become the product of choice among restaurant chains and health care providers for good reason. The ABS faceted construction offers an unparalleled strength-to-weight ratio. And with 15 color and size combinations, they match nearly every decor. Constructed in the USA from BPA free plastic with foam insulation for a temperature retention of 2–3 hours. Features a push button top and optional brew-thru and take-apart lids, sold separately.



0.6 Liter (20 oz.) | 6" X 4.75" X 8"

- NG501BL Black
- NG501WH White
- NG501BU Burgundy
- NG501AL Almond
- NG501GR Gray

1 Liter (33.8 oz.) | 6.25" X 5.5" X 9"

- NG101BL Black
- NG101WH White
- NG101BU Burgundy
- NG101AL Almond
- NG101GR Gray

2 Liter (67.6 oz.) | 7.25" X 6" X 10.75"

- NG421BL Black
- NG421WH White
- NG421BU Burgundy
- NG421AL Almond
- NG421GR Gray

Replacement parts: regular lid, decaf lid, brew-thru lid.

new Generation®



Eco-Serv™

replacement parts: lid (regular, decaf)



ECO-SERV™ CARAFE

Designed in 1998, our Eco-Serv™ Carafe became a classic coffee service companion in diners and healthcare settings everywhere. Constructed in the USA from BPA-free plastic with foam insulation for a temperature retention of 2–3 hours and available in 2 sizes and 4 classic colors for a server that's versatile enough for nearly any application. Ideal for any beverage service in restaurants, hospitals, board rooms and more. Features a push button top and snap-on decaf indicator.



0.6 Liter (20 oz.) | 7" X 5" X 8.25"

- ECO6BL Black
- ECO6WH White
- ECO6LA Latte
- ECO6SLG Slate Gray

1.3 Liter (44 oz.) | 7.75" X 5.75" X 9.75"

- ECO13BL Black
- ECO13WH White
- ECO13LA Latte
- ECO13SLG Slate Gray

Replacement parts: lid, decaf indicator tab.

TWIST 'N' SERV™

The Twist 'N' Serv™ Carafe is NSF listed for safe, dependable use in commercial environments. Dishwasher safe for easy cleaning and stackable for space-efficient storage, it's designed to meet the demands of high-traffic settings. Made with durable BPA-free plastic and foam insulation, it keeps beverages hot for 2–3 hours. Ideal for healthcare, government, and business settings, this push-button carafe provides a practical and reliable solution for everyday service needs.



0.6 Liter (20 oz.)

7.75" X 6" X 7.75"

- TNSPB06BL Push Lid
- TNSPB06WH Push Lid
- TNS06BL Twist Lid
- TNS06WH Twist Lid



1.2 Liter (40.5 oz.)

8" X 6" X 9.75"

- TNSPB12BL Push Lid
- TNSPB12WH Push Lid
- TNS12BL Twist Lid
- TNS12WH Twist Lid



2 Liter (67.6 oz.)

8.25" X 6.5" X 10.75"

- TNSPB2BL Push Lid
- TNSPB2WH Push Lid
- TNS2BL Twist Lid
- TNS2WH Twist Lid

Replacement parts: push button lid, twist lid.

A redesigned classic.

We've redesigned our Twist 'N' Serv™ Carafe to serve you and your guests better! Available in 3 sizes and 2 colors, it offers versatile options for any setting. Universal lids fit all sizes, and a twist lid style is also available for added convenience and functionality.

Swatches



BL WH

Sizes

0.6 Liter (20 oz)

1.2 Liter (40.5 oz)

2 Liter (67.6 oz)

Universal twist and push-button lids fit on every size server

Superior clean-ability meets NSF sanitation standards

They're stackable! Flip them over to stack them during storage

A Timeless Classic

Classic Carafe



CLASSIC CARAFE

The Classic Carafe is perfect for table service, featuring a sleek stainless-steel exterior and a glass or stainless vacuum interior that keeps beverages hot or cold for extended periods. With a drip-less spout and tamper-proof stopper lid, it offers both safety and convenience, making it an easy addition to your beverage service.



GLASS LINED

0.6 Liter (20 oz) | 6.75" X 5" X 8.75"

- CGC060CP Copper
- CGC060SS Stainless

1 Liter (33.8 oz) | 6.75" X 5.25" X 10"

- CGC101CP Copper
- CGC101SS Stainless



STAINLESS LINED

1 Liter (33.8 oz.) | 6.5" X 5" X 10"

- CGCS10CP Copper
- CGCS10SS Stainless



Replacement parts: lid (regular, decaf), lid stopper, gasket, liner.

COFFEE AT A TOUCH

Long lasting heat.
Easy dispensing.

The Coffee At A Touch Carafe features an ergonomic push button lid, a metal flap for a controlled pour, and glass vacuum insulation for maximum heat retention. Its clear coat finish keeps it looking pristine by resisting fingerprints and water spots. The 1.9-liter size is available with a brew-thru lid for added convenience.



COFFEE AT A TOUCH

1 Liter (33.8 oz) | 7" X 5.25" X 10.5"

■ HPS101 Brushed Stainless

1.6 Liter (54 oz) | 6.75" X 5.25" X 13.5"

■ HPS161 Brushed Stainless

1.9 Liter (64.2 oz) | 7" X 6" X 12"

■ HPS191 Brushed Stainless

Replacement parts: lid (regular, decaf, brew-thru), gasket, liner.



ALPHA CARAFE

Glass-lined,
plastic exterior.

The Alpha Carafes combine the long-lasting heat retention of a glass vacuum liner with an economical polypropylene plastic body, for a durable server fit for restaurants, health care and more. A well-designed push button top allows for easy, one-handed operation, making it a practical solution for busy beverage service.



ALPHA CARAFE

1 Liter (33.8 oz) | 7.5" X 5.5" X 11.25"

- ALPH10BL Black
- ALPH10WH White

Replacement parts: lid (regular, decaf, brew-thru), gasket, liner.



This single walled Slim Pitcher is as classy as they come and is now available in six finishes—brushed (BS), polished (PS), vintage gold (VG), rose gold (RG), dark tungsten (DT), and black onyx (BX)—to complement a variety of decors and styles.



WITH ICE GUARD

1.9 Liter (64.2 oz) | 6.25" X 4.25" X 10"

- X7025 Polished Stainless
- X7025BS Brushed Stainless
- X7025BSVG Vintage Gold
- X7025BSRG Rose Gold
- X7025BSDT Dark Tungsten
- X7025BSBX Black Onyx

NO ICE GUARD

1.9 Liter (64.2 oz) | 6.75" X 4.25" X 10"

- X7025NG Polished Stainless
- X7025NGBS Brushed Stainless



A clear winner!

Enhance your Slim Pitcher with the new clear lid. Made of durable, dishwasher-safe Tritan plastic, it offers added convenience without compromising the pitcher's sleek, sophisticated style.

NEW!

CLEAR LID

4.25" X 1.5"

■ X7025LIDCL Clear



We're seeing double!



DOUBLE WALL SLIM

The Double Wall Slim Pitcher, with a compact design, fits easily in tight spaces. Its double-wall exterior prevents condensation, and a rubber-coated handle ensures easy transport and pouring.

1.6 Liter (54 oz) | 7" X 4.25" X 10"

- X7DWBS Brushed Stainless
- X7DWPS Polished Stainless



DOUBLE WALL BELL

The Double Wall Bell Pitcher, crafted from brushed 18/8 stainless steel, features double-wall insulation to prevent condensation, a built-in ice guard, a rounded bell shape, and a sturdy handle for easy carrying and pouring.

1.3 Liter (44 oz) | 8.5" X 5.75" X 9.5"

- WPB2BSDW Brushed Stainless



BELL PITCHER

Classic shape.

Our Bell Pitcher is a must-have for water service. It has a distinctive round bell shape with a thick handle making it easy to carry and pour. Constructed from brushed 18/8 stainless steel and with a built-in ice guard. Available in five finishes—brushed (BS), vintage gold (VG), rose gold (RG), dark tungsten (DT), and black onyx (BX).



WITH ICE GUARD

2 Liter (67.6 oz) | 8.5" X 5.75" X 9.5"

- WPB2BS Brushed Stainless
- WPB2BSVG Vintage Gold
- WPB2BSRG Rose Gold
- WPB2BSDT Dark Tungsten
- WPB2BSBX Black Onyx

NO ICE GUARD

2 Liter (67.6 oz) | 8.5" X 5.75" X 9.5"

- WPB2BSNG Brushed Stainless

ALTUS PITCHER

Sleek and suave.



The Altus Water Pitcher has a silhouette that coordinates perfectly with our Altus Carafes found on page 86. With a unique shape unlike any other pitcher on the market, this stainless-steel pitcher will add distinctive style to your table service.



ALTUS PITCHER

2 Liter (67.7 oz.)
6.75" X 5.5" X 11"

■ ALTUWPBS Brushed Stainless



FOAM-LINED PITCHERS

Our versatile WP Carafes feature a flip-top lid, foam insulation, and no-condensation design, perfect for hot or cold beverages. Ideal for custom etching, they're available in satin (SA) or chrome (CH) finishes, making them great for restaurants, meetings, room service, and conferences.



0.6 Liter (20 oz.)
5.25" X 4" X 7.25"

■ WP6SA Satin

1 Liter (33.8 oz.)
6" X 4.5" X 8.25"

■ WP1SA Satin
■ WP1CH Chrome

1.5 Liter (50.7 oz.)
6" X 4.5" X 10.75"

■ WP15SA Satin
■ WP15CH Chrome

2 Liter (67.6 oz.)
6.5" X 5.25" X 10.5"

■ WP20SA Satin

Insulated water pitchers.



Replacement parts: lid.

ICE TUBE PITCHERS

Our Ice Tube Pitchers are constructed from BPA-free SAN and MS plastics, giving them good clarity and durability. Available in multiple sizes and shapes—smooth, ribbed, and bell—that all share the same lid and ice tube core. Mix and match for a fun variety on your tables or choose one style for a more uniform look.



FLAVOR INFUSION

Optional Infuser Tube

1.75" X 1.75" X 6.75"

AWPINF

MS Styrene Plastic



1.9 Liter (64.2 oz.)
7" X 6" X 10.25"
 SWP19SB Smooth Body
 SAN Plastic



2.4 Liter (81.1 oz.)
7.5" X 6" X 11.25"
 SWP24BS Bell Body
 SAN Plastic

3.3 Liter (111.5 oz.)
7.75" X 6.75" X 11.25"
 SWP33RB Ribbed Body
 SAN Plastic



3.3 Liter (111.5 oz.)
7.75" X 6.75" X 11.5"
 SWP33SB Smooth Body
 SAN Plastic



1.9 Liter (64.2 oz.)
7.25" X 6" X 10.5"
 MWP19SB Smooth Body
 MS Styrene Plastic



3 Liter (101.4 oz.)
7.75" X 6.75" X 11.25"
 MWP30SB Smooth Body
 MS Styrene Plastic



3.3 Liter (111.5 oz.)
8" X 7.25" X 11.25"
 MWP33RB Ribbed Body
 MS Styrene Plastic

Replacement parts: lid, infuser tube, ice tube.

WATER PITCHERS

Sippin' pretty.

Perfect for both commercial and home use, our plastic water pitchers combine durability with modern style. Designed for easy handling and spill-free pouring, they're ideal for serving water, juices, or iced tea. Lightweight yet sturdy, these pitchers come in various sizes and finishes, offering long-lasting performance and a sleek addition to any table.



SI CLEAR PITCHER

The SI Commercial Clear Pitcher is BPA-free, stain-resistant, and features a thick wall to prevent sweating. It includes a pour-through lid, with replacements available. Ideal for cold beverages.

1.9 Liter (64.2 oz.)
8.5" X 5.5" X 9.75"
10-00403-000

WATERWAY CARAFE

The Waterway Carafe is a durable, resealable plastic bottle with the clarity of glass. Its liquid-tight lid keeps contents fresh and free from contaminants, making it perfect for serving water and juices at the table.

1.5 Liter (50.7 oz.)
4.25" X 4.25" X 13.25"
NB51PO



Replacement parts: lid, infuser tube, ice tube.



FLAVOR INFUSION

Enjoy flavor-infused water with the Service Ideas Flavor Infusion pitcher, featuring an infuser core for quick drinks with fruits, citrus, and herbs—perfect for restaurants, hotels, and spas.

1.9 Liter (64.2 oz.)
6.75" X 4.5" X 11"
NEPH02-1



SCULPTURED ICE™

The stackable Sculptured Ice™ Pitcher, made of BPA-free SAN plastic, has a wavy pattern, clear lid, and no-drip spout. It's scratch-resistant, dishwasher safe, and easy to grip.

1.9 Liter (64.2 oz.)
6.75" X 5" X 9"
SI2LITCL



3-WAY PITCHER

The 3-Way Pour Pitcher's classic design suits beer, water, and soda. Its handle divot ensures controlled pouring from the side spouts. Made from BPA-free Tritan™ for extra clarity and NSF listed.

1.7 Liter (60 oz.)
7" X 5.5" X 8.5"
PCP60V2



DOUBLE WALL STAINLESS PRESS

The Double Wall Stainless Press is made of 18/8 stainless steel and features a replaceable 3-piece screen system, ergonomic handle, and lid knob for easy brewing and pouring. Its double-wall construction keeps the exterior cool while retaining heat. The body is dishwasher safe, while the lid and screen should be hand washed. Available in brushed (BS) or polished (PS) stainless finishes.



DOUBLE WALL STAINLESS PRESS

0.4 Liter (13.5 oz) | 5.25" X 3" X 6.5"

- PDWSA350BS Brushed Stainless
- PDWSA350PS Polished Stainless

0.8 Liter (27 oz) | 6" X 3.75" X 7.75"

- PDWSA800BS Brushed Stainless
- PDWSA800PS Polished Stainless

1 Liter (33.8 oz) | 7" X 5.25" X 8.5"

- PDWSA1000BS Brushed Stainless
- PDWSA1000PS Polished Stainless

Replacement parts: lid, screen.

DOUBLE WALL GLASS PRESS

The Double Wall Glass Press offers an elegant presentation with its transparent all-glass body, showcasing the brewing process. Its double-wall construction keeps the exterior cool while retaining heat inside. The three-part screen is versatile for coffee, tea, or craft cocktails. To extend its life, hand wash the screen and parts.



DOUBLE WALL GLASS PRESS

0.4 Liter (13.5 oz) | 6.25" X 4.5" X 4.5"

■ T299SR Glass

0.6 Liter (20 oz) | 7" X 4.75" X 6.75"

■ T499SR Glass

1 Liter (33.8 oz) | 6.75" X 4.25" X 8.5"

■ T899SR Glass

Replacement parts: lid, screen.

FROTHING PITCHERS



For specialty coffee drinks.

Our Frothing Pitchers are constructed from 18/8 stainless steel and available in four sizes. Complete with embossed measurements visible on the inside and outside to prevent milk waste, and a hole above the handle to rest a thermometer, this frothing pitcher works great for creating specialty lattes and cappuccinos.



0.6 Liter (20 oz.)
5.25" X 3.5" X 4.25"
FROTH206



0.95 Liter (32 oz.)
6" X 4" X 5"
FROTH326



1.5 Liter (50.7 oz.)
6.75" X 4.25" X 6.25"
FROTH506



1.9 Liter (64.2 oz.)
7.75" X 4.75" X 6.75"
FROTH646

CERAMIC TEAPOTS

Made with food-safe ceramics, our Ceramic Teapots come in all sorts of different shapes and sizes. Give guests a classy display for self-service tea. Perfect for loose leaf tea and keeping it warm. After the first cup of tea is poured, the brew basket sits above the water so you don't over-steep your tea. Available in black (BL) and white (WH) finishes.



Replacement parts: lids, tea basket.



ROUND

0.3 Liter (10 oz.) | 6" X 4.5" X 3"

- TPC10BL Black
- TPC10WH White

0.47 Liter (16 oz.) | 6.75" X 5" X 3.75"

- TPC16BL Black
- TPC16WH White



OVAL

0.47 Liter (16 oz.)

7" X 4.25" X 4.25"

- TPCV16BL Black
- TPCV16WH White



ENGLISH

0.47 Liter (16 oz.)

7.25" X 4.25" X 4.25"

- TPCE16BL Black
- TPCE16WH White



WASHINGTON

0.47 Liter (16 oz.)

6.5" X 3.75" X 4.75"

- TPCW16BL Black
- TPCW16WH White



DOUBLE WALL PLASTIC TEAPOT

Introduced in 1982, our Plastic Teapots are one of the original plastic teapots. Made in USA and constructed from ABS plastic with double wall insulation so heat won't transfer as quickly. Available in 6 classic colors with or without a tether.



TETHER

0.35 Liter (16 oz.) | 6.75" X 3.75" X 6.25"

- TST612AL Almond
- TST612BL Black
- TST612BU Burgundy
- TST612FG Forest Green
- TST612ST/BR Stoneware Brown
- TST612WH White



NO TETHER

0.35 Liter (16 oz.) | 6.75" X 3.75" X 6.25"

- TS612AL Almond
- TS612BL Black
- TS612BU Burgundy
- TS612FG Forest Green
- TS612ST/BR Stoneware Brown
- TS612WH White

Replacement parts: lids, tether.



TEA TIME TEAPOT

A sleek, stainless steel teapot with a charming spherical shape, available in two sizes. Ideal for tea, coffee, or after-dinner desserts, it features an elongated handle to protect your knuckles from heat.

1.2 Liter (40.5 oz.)

8.25" X 5.75" X 6.5"

TT12SS Polished Stainless

0.7 Liter (24 oz.)

6.25" X 4.75" X 5.5"

TT07SS



CLASSIC TEA PRESS

For the freshest cup of tea, brew your favorite loose tea in our Classic Tea Press. Watch your coffee or tea steep through the glass exterior and simply lock it into the top of the lid when it's done. Replacement liner available.

0.6 Liter (20 oz.)

6.5" X 4.75" X 6.75"

T600CC

SPECIALTY TEA



TEA BALL

Our Tea Ball has a look you would recognize anywhere with a glass liner and an asymmetric plastic outer shell. Brew your favorite loose-leaf tea in the removable tea basket. Comes with a handy portion spoon.

0.75 Liter (25.5 oz.)

6.75" X 5.75" X 5.5"

TB750CC



BEECHWOOD TEA BOXES

An ideal accompaniment to any tea service. Our beechwood Tea Boxes are finished with a modern black finish and windowed top. Available in 6 or 12 compartment sizes to keep your teas neat and tidy.

6 Compartment

8.75" X 7.5" X 3.25"

TB006

12 Compartment

11.25" X 10.75" X 3.25"

TB012

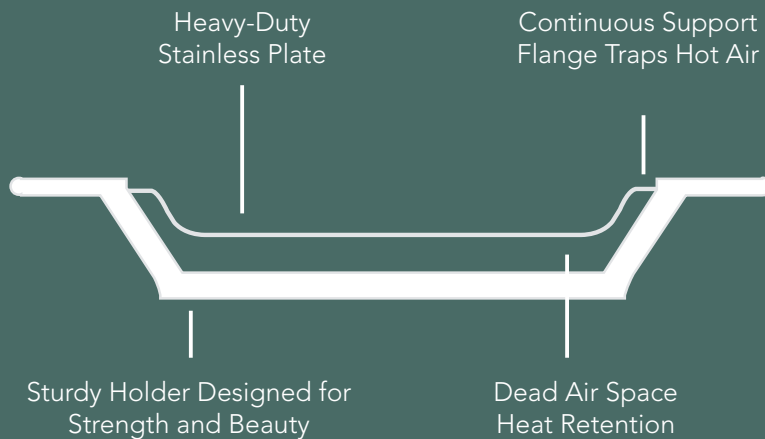
Replacement parts: lids, infuser baskets, scoops.

THERMO-Plate®

SELL THE SIZZLE

Seventy-nine years ago, we carried out the first sizzling plate of food on our patented Thermo-Plate® Platters. Table service has never been the same. This lightweight and versatile serving tool is designed to insulate your food without causing it to lose its integrity. Now, hot foods stay steamy hot, and cold foods stay chilled—even through dinner conversation.

Lightweight polyester holder provides strength and durability and can greatly reduce replacement costs of broken china. Continuous support flange traps hot air, sturdy holder designed for strength and durability, dead air space for heat retention. Add butter, oil, or water to the hot insert and watch it sizzle!





Original Holders: OT11BL,
LO12BL

Original Inserts: OT11SS,
LO12SS

Half Inserts: LO125SS



Oval Holders: RO117BL,
RO128BL

Oval Inserts: FP1/RO117SS,
FP1/RO117AL, RO128SS



Round Holders: RT7BL,
RT701BL, RT10BL, RT1025BL

Round Inserts: RT7SS,
RT10SS, RT1025SS

Oyster Inserts: RTO10SS



Fish Holders: FB1BL

Fish Inserts: FP1/RO117SS,
FP1/RO117AL



See pages 144-1457
for complete platter kits.

THERMO-PLATE® SOLUTIONS



ORIGINAL

A rounded rectangle shape that works great for main courses. Use the divided half plates for combinations of hot and cold presentations.

Stainless Plate, Full 12.5" X 8" X 1.25"

OT11BLC
(OT11BL + OT11SS)

Large Stainless Plate, Full 14" X 9.5" X 1"

LO12BLC
(LO12BL + LO12SS)

Large Stainless Plate, Half 14" X 9.5" X 1"

LO125BLC
(LO12BL + LO125SS)

OVAL

An oval shape, available with or without handles, great for main courses. Use the handled version (pictured above) when you need extra gripping support.

Stainless Plate, Handles 13.75" X 8.5" X 1.25"

RO117BLC
(RO117BL + FP1/RO117SS)

Aluminum Plate, Handles 13.75" X 8.5" X 1.25"

RO117BLAC
(RO117BL + FP1/RO117AL)

Stainless Plate, Rounded 11.75" X 10" X 1.25"

RO128BLC
(RO117BL + FP1/RO128SS)

ROUND

In a variety of sizes, the round shape works well for side dishes and appetizers. Add the oyster insert plate to serve up oysters on the half-shell.

Stainless Plate, Small Sloped 9.5" X 9.5" X 1.25"

RT7BLC
(RT7BL + RT7SS)

Stainless Plate, Small 9.5" X 9.5" X 1.25"

RT701BLC
(RT701BL + RT7SS)

Stainless Plate, Large 12" X 12" X 1.25"

RT10BLC
(RT10BL + RT10SS)

Stainless Plate, X-Large 12.25" X 12.25" X 1.25"

RT1025BLC
(RT1025BL + RT1025SS)

FISH

Our oval inserts set in a unique seafood themed shape. Use this fish-shaped platter for your seafood entrées and appetizers.

Stainless Plate 14.25" X 9.75" X 1.25"

FP1BLC
(FP1BL + FP1/RO117SS)

Aluminum Plate 14.25" X 9.75" X 1.25"

FP1BLAC
(FP1BL + FP1/RO117AL)

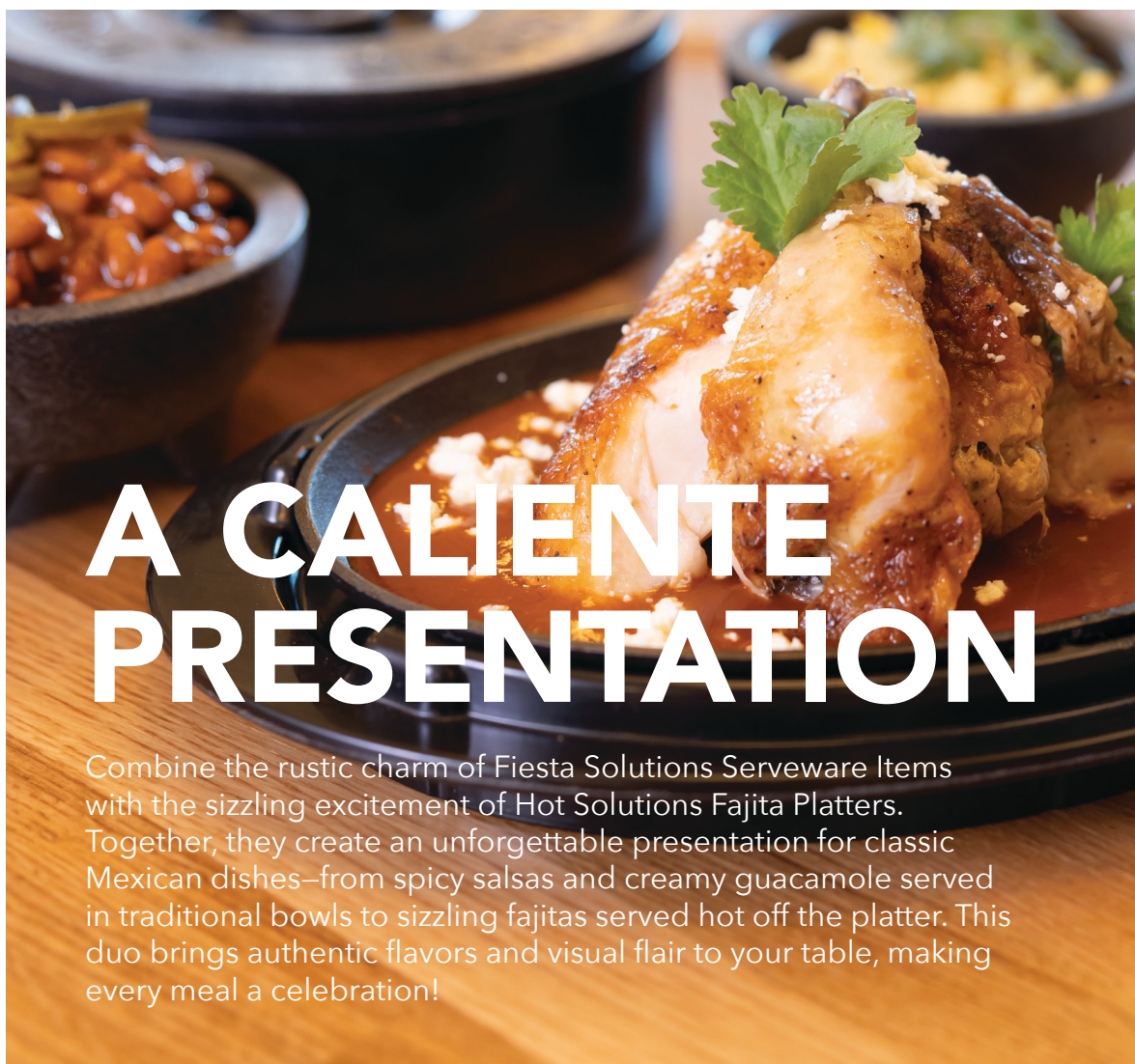


THERMO-Plate®

FIESTA SOLUTIONS



HOT SOLUTIONS



A CALIENTE PRESENTATION

Combine the rustic charm of Fiesta Solutions Serveware Items with the sizzling excitement of Hot Solutions Fajita Platters. Together, they create an unforgettable presentation for classic Mexican dishes—from spicy salsas and creamy guacamole served in traditional bowls to sizzling fajitas served hot off the platter. This duo brings authentic flavors and visual flair to your table, making every meal a celebration!

FIESTA SOLUTIONS SERVEWARE

AUTHENTIC SERVEWARE FOR VIBRANT DINING

The Fiesta Solutions Serveware Collection offers tortilla warmers and molcajetes, blending authentic Mexican tradition with rustic charm and practical design to highlight vibrant flavors and textures.



LARGE MOLCAJETE BOWL

56 oz | 8" X 8" X 4.25"

MB56BL



LARGE MOLCAJETE BOWL W/ PESTLE

50 oz | 7.5" X 7.5" X 4.25"

MB50PBL



MEDIUM MOLCAJETE BOWL (4 PCS)

10 oz | 5.25" X 5.25" X 2.75"

MB10BL



SMALL MOLCAJETE BOWL (4 PCS)

4 oz | 4.25" X 4.25" X 1.75"

MB4BL



LARGE TORTILLA WARMER

12.25" X 12.25" X 4"
TW12BL



SMALL TORTILLA WARMER

8.75" X 8.75" X 3"
TW85BL

HOT SOLUTIONS™ PLATTERS

INSULATED SKILLET HOLDERS



Continuous support flange traps hot air

Lightweight insulation keeps platter cool to the touch



Inner ceramic core traps heat at 200°F



SMALL ROUND

15" X 11" X 1.5"

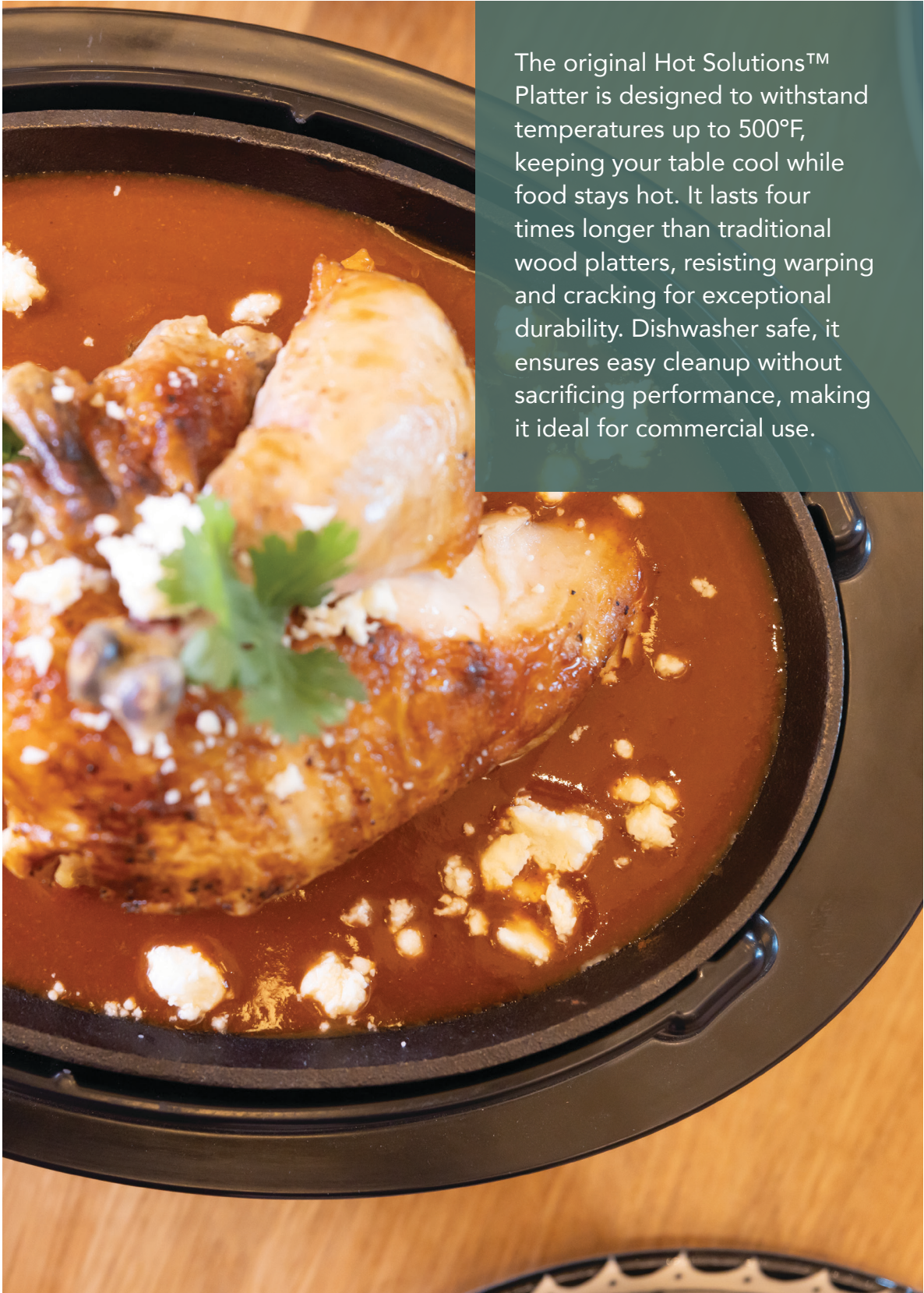
HS15BL2



LARGE OVAL

12.5" X 9" X 1.5"

HS13BL3



The original Hot Solutions™ Platter is designed to withstand temperatures up to 500°F, keeping your table cool while food stays hot. It lasts four times longer than traditional wood platters, resisting warping and cracking for exceptional durability. Dishwasher safe, it ensures easy cleanup without sacrificing performance, making it ideal for commercial use.

Hot Solutions™ Birchwood Skillets offer the natural warmth and beauty of birchwood, sure to impress your customers and enhance your presentation. Their lightweight design makes service effortless, while their durable construction resists warping and cracking, ensuring long-lasting performance. Perfect for sizzling fajita presentations, they seamlessly blend elegance with practicality.



HOT SOLUTIONS™ BIRCHWOOD

AUTHENTIC PRESENTATION



BIRCH & ALUMINUM SKILLET SET

16.25" X 9" X 1.25"

SK107BHC



BIRCHWOOD HOLDER

12" X 9" X 0.75"

SK107BH

JUST THE SKILLETS



OVAL CAST IRON

10.25" X 7.5" X 0.75"

SK10CI



ALUMINUM WITH HANDLE

14.75" X 7.25" X 0.15"

SK107CA

PUSH FOR SERVICE LIGHT

IMPRESS WITH EASE

Impress your guests with the perfect balance of attentive but not overwhelming service with the Service Ideas Push-for-Service Light. The perfect addition for restaurants, coffee shops, and other service-oriented hospitality businesses. Simply set the light on tables to create an easy way for guest to signal service is needed. With just a simple push of a button, your server will be visually alerted that attention is required.



PUSH FOR SERVICE LIGHT

3" X 3" X 8"

PFSBLK Black



- LED light bulb activated by a button switch at the top and powered by two standard AAA batteries (not included)
- Constructed of durable plastic with a weighted base to keep it from toppling over during service
- Designed with a small footprint to easily fit among dinnerware and décor



NEW!

MODERN EDGE SERVING TRAY

The Modern Edge Removable Insert Tray collection combines elegance with practicality. Available in 9", 12", and 14" sizes with high-polished finishes in Stainless, Black Onyx, Rose Gold, and Vintage Gold, these low-profile trays feature a removable non-slip insert and transform into sleek appetizer plates. Stackable and modern, they're the perfect blend of style and function.

Swatches



BS VG RG BX

Sizes

9" X 9" X 1"

12" X 12" X 1"

14" X 14" X 1"

Replacement parts: silicone insert.

MODERN EDGE

NON-SLIP REMOVABLE INSERT TRAY



BRUSHED STAINLESS

TRME9RI	9" X 9" X 1"
TRME12RI	12" X 12" X 1"
TRME14RI	14" X 14" X 1"



VINTAGE GOLD

TRME9RIVG	9" X 9" X 1"
TRME12RIVG	12" X 12" X 1"
TRME14RIVG	14" X 14" X 1"



ROSE GOLD

TRME9RIRG	9" X 9" X 1"
TRME12RIRG	12" X 12" X 1"
TRME14RIRG	14" X 14" X 1"



BLACK ONYX

TRME9RIBX	9" X 9" X 1"
TRME12RIBX	12" X 12" X 1"
TRME14RIBX	14" X 14" X 1"

NON-SLIP REMOVABLE INSERT TRAYS

SERVE WITH STYLE

The Non-Slip Round Tray is a versatile serving essential for bars and restaurants. Its removable rubber insert provides a non-slip surface to secure glasses and plates or can be removed for an elegant appetizer presentation. Designed for organized storage, these stackable trays are crafted from durable 18/8 stainless steel with black silicone rubber.



Replacement parts: silicone insert.



ROUND

Small | 11" X 11" X 1"

■ TR119RI Brushed Stainless

Medium | 14" X 14" X 1"

■ TR1412RI Brushed Stainless

Large | 16" X 16" X 1"

■ TR1614RI Brushed Stainless



SMALL RECTANGLE

13.5" X 7" X 0.75"

■ TR137RI Brushed Stainless



LUXE METALLICS



Small | 11" X 11" X 1"

- TR119RIDT Dark Tungsten
- TR119RIVG Vintage Gold
- TR119RIRG Rose Gold
- TR119RIBX Black Onyx

Medium | 14" X 14" X 1"

- TR1412RIDT Dark Tungsten
- TR1412RIVG Vintage Gold
- TR1412RIRG Rose Gold
- TR1412RIBX Black Onyx

Large | 16" X 16" X 1"

- TR1614RIDT Dark Tungsten
- TR1614RIVG Vintage Gold
- TR1614RIRG Rose Gold
- TR1614RIBX Black Onyx



EARTHY NATURALS



Medium | 14" X 14" X 1"

- TR1412RILW Light Wood
- TR1412RIDW Dark Wood
- TR1412RIWM White Marble

12-SIDED TRAYS

REMOVABLE NON-SLIP INSERT TRAYS.



The 12-Sided Non-Slip Removable Insert Tray features a sleek faceted design and versatile functionality, perfect for bars and restaurants. Its rubber insert offers a secure, non-slip surface for bar service and removes for elegant food presentations. Made from durable 18/8 stainless steel with high-quality black silicone, it balances style and durability. Stackable for space-saving storage and easy organization in busy service areas.

Swatches



Sizes

11" X 11" X 1"
14" X 14" X 1"
16" X 16" X 1"





A geometric twist on the beloved classic

Small | 11" X 11" X 1"

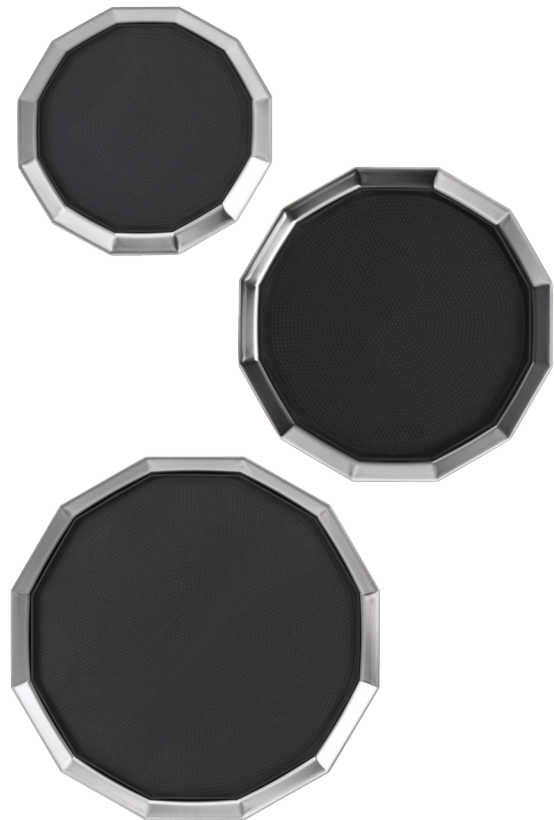
- TRPN119RIBS Brushed Stainless
- TRPN119RIBSVG Vintage Gold
- TRPN119RIBSRG Rose Gold
- TRPN119RIBSBX Black Onyx

Medium | 14" X 14" X 1.25"

- TRPN1412RIBS Brushed Stainless
- TRPN1412RIBSVG Vintage Gold
- TRPN1412RIBSRG Rose Gold
- TRPN1412RIBSBX Black Onyx

Large | 16" X 16" X 1"

- TRPN1614RIBS Brushed Stainless
- TRPN1614RIBSVG Vintage Gold
- TRPN1614RIBSRG Rose Gold
- TRPN1614RIBSBX Black Onyx



Replacement parts: silicone insert.

NON-SLIP SILICONE SURFACE TRAYS

ULTIMATE NON-SLIP GRIP

Combining the beauty of stainless steel with the non-slip qualities of silicone rubber, our Silicone Surface Trays feature a molded-in grip, giving it a non-slip top and bottom that will help keep your drinks upright during even the busiest cocktail hour. Available in round or rectangle designs. Completely dishwasher safe and stackable for convenient cleaning and storage.



ROUND

Small | 11" X 11" X 1" (Inner: 9" X 9")

■ TR119SR Brushed Stainless

Medium | 14" X 14" X 1" (Inner: 12" X 12")

■ TR1412SR Brushed Stainless

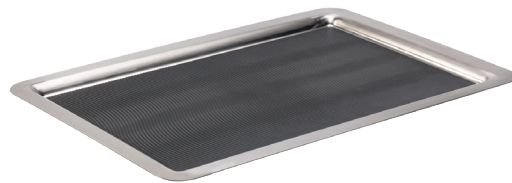
Large | 16" X 16" X 1" (Inner: 14" X 14")

■ TR1614SR Brushed Stainless

LARGE RECTANGLE

19.75" X 13.75" X 0.75" (Inner: 20" X 14")

■ TRRT2014SR Brushed Stainless



Silicone top
and bottom





Our Stainless Rectangle Serving Tray is an excellent choice for hotel and buffet service. Featuring a traditional design with ergonomic handles for easy, comfortable transport. Made from durable 18/8 stainless steel with a brushed finish.

RECTANGLE SERVING TRAY WITH HANDLES

20.5" X 12.5" X 2.75"

■ TRRTH2012BS Brushed Stainless

STAINLESS SERVING TRAY



MOD18 STEELWORKS



Mod18 Steelworks

STAINLESS SERVING PIECES

The Mod18 collection features table accessories crafted from heavy-gauge 18/8 stainless steel, offering exceptional durability and timeless appeal. With your choice of perforated or art deco-inspired designs, these pieces blend strength with elegance. Available in classic brushed or polished stainless steel, as well as our Metallic Elements finishes, they bring both style and functionality to any setting. Use them to create a cohesive look or mix and match with your current tableware for a contemporary touch.



Mod18 Steelworks

RECTANGULAR SERVING TRAYS



Available in narrow, medium, and large rectangle sizes. These heavy-duty stainless-steel trays feature contoured handles to create a comfortable grip and sleek look. Available in brushed (SB) and polished (SM) stainless steel.



Narrow | 20.5" X 6.5" X 0.25"

- SB-41 Brushed Stainless
- SM-41 Polished Stainless



Medium | 16.5" X 13.5" X 0.25"

- SB-43 Brushed Stainless
- SM-43 Polished Stainless



Large | 20.75" X 11.5" X 0.25"

- SB-42 Brushed Stainless
- SM-42 Polished Stainless



NEW MOD18 DECO COLLECTION



Timeless art deco serveware to elevate your table.



Introducing the Mod18 Steelworks Deco stainless steel tableware collection, featuring stackable baskets with an art deco-inspired sunburst pattern. Laser-cut for a stunning presentation, these versatile baskets add style and functionality to your table, perfect for serving bread, fruits, or condiments while offering practical storage solutions for back of the house.



LARGE ROUND BASKET

12" X 12" X 4"

DB-63 Brushed Stainless
 DB-63RG Rose Gold
 DB-63VG Vintage Gold
 DB-63BX Black Onyx



MEDIUM ROUND BASKET

9" X 9" X 3.5"

DB-64 Brushed Stainless
 DB-64RG Rose Gold
 DB-64VG Vintage Gold
 DB-64BX Black Onyx



SMALL ROUND BASKET

6.5" X 6.5" X 2.75"

DB-75 Brushed Stainless
 DB-75RG Rose Gold
 DB-75VG Vintage Gold
 DB-75BX Black Onyx



SQUARE FLARE BASKET

6.25" X 6.25" X 4.25"

DB-79 Brushed Stainless
 DB-79RG Rose Gold
 DB-79VG Vintage Gold
 DB-79BX Black Onyx



RECTANGLE BASKET

10.25" X 6.25" X 3.25"

DB-76 Brushed Stainless
 DB-76RG Rose Gold
 DB-76VG Vintage Gold
 DB-76BX Black Onyx



NARROW RECTANGLE BASKET

12" X 3.5" X 1.75"

DB-77 Brushed Stainless
 DB-77RG Rose Gold
 DB-77VG Vintage Gold
 DB-77BX Black Onyx



FLARED NAPKIN HOLDER

7.25" X 7" X 4.25"

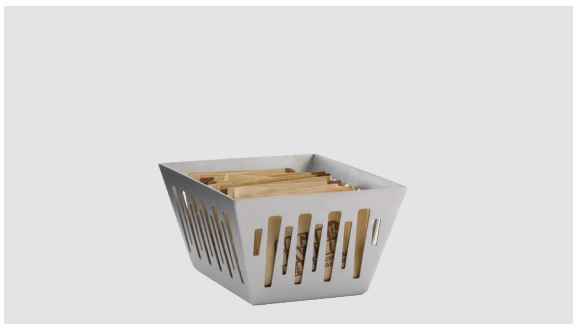
DB-78 Brushed Stainless
 DB-78RG Rose Gold
 DB-78VG Vintage Gold
 DB-78BX Black Onyx



TALL ROUND BASKET

3.75" X 3.75" X 6"

DB-70 Brushed Stainless
 DB-70RG Rose Gold
 DB-70VG Vintage Gold
 DB-70BX Black Onyx



SUGAR PACKET HOLDER

4.75" X 3.75" X 2.25"

DB-61 Brushed Stainless
 DB-61RG Rose Gold
 DB-61VG Vintage Gold
 DB-61BX Black Onyx



SUGAR STICK HOLDER

3" X 3" X 2.25"

DB-60 Brushed Stainless
 DB-60RG Rose Gold
 DB-60VG Vintage Gold
 DB-60BX Black Onyx

THE OG MOD18



ROUND FRUIT & BREAD BASKETS

Small | 6.5" X 6.5" X 2.5"

- SB-75 Brushed Stainless
- SM-75 Polished Stainless

Medium | 9" X 9" X 3.5"

- SB-64 Brushed Stainless
- SM-64 Polished Stainless

Large | 12" X 12" X 3.75"

- SB-63 Brushed Stainless
- SM-63 Polished Stainless



BREADSTICK HOLDER

3.5" X 3.5" X 6"

- SB-70 Brushed Stainless
- SM-70 Polished Stainless



RECTANGLE BASKET

9" X 5" X 3"

- SB-76 Brushed Stainless
- SM-76 Polished Stainless

The Original Mod18 Steelworks collection showcases modern elegance with durable, heavy-gauge stainless steel and intricate laser-cut perforated designs. This versatile lineup includes sturdy round and rectangular baskets, snack bowls, and holders for breadsticks, sugar sticks, and packets—all crafted to combine lasting durability with contemporary style.



TRIPLE SNACK BOWL

7.5" X 4.25" X 4"

- SB-72 Brushed Stainless
- SM-72 Polished Stainless



SUGAR STICK HOLDER

2" X 2" X 3"

- SB-60 Brushed Stainless
- SM-60 Polished Stainless



SUGAR PACKET HOLDER

3.5" X 2.5" X 2.25"

- SB-61 Brushed Stainless
- SM-61 Polished Stainless

WIRE BASKETS

Collection of stainless steel multi-purpose baskets.



STANDARD WIRE BASKETS

Perfect for more than bread! Use them to present warm hand towels for guests after a meal. Made from polished 18/8 stainless steel with a weighted base.

Small
7" X 7" X 3.5"

■ WBR7PS Polished

Oval
9.75" X 7.25" X 3.5"

■ WBBO9PS Polished

Large
9" X 9" X 4"

■ WBR9PS Polished

CORNUCOPIA WIRE BASKET

The Cornucopia Wire Basket is perfect for fruit, bagels, or decor. Stand it tall or lay it on its side for a unique display. Made from polished 18/8 stainless steel.

Tall Basket
10.5" X 10.5" X 11.5"

■ BKTA Polished





WAVE WIRE BASKETS

These round baskets feature a wave design, perfect for breads, napkins, or fruit. Made from brushed 18/8 stainless steel.

Small

7" X 7" X 3.75"

■ WBRW7BS Brushed

Large

8.75" X 8.75" X 4.25"

■ WBRW9BS Brushed

OVAL WIRE BASKET

The Oval Wire Basket is versatile for fruit, pastries, or warm hand towels, adding charm to any dining experience. Made from polished 18/8 stainless steel.

Oval Basket
12.5" X 7.5" X 4.75"

■ BKWI Polished



BREADSTICK WIRE BASKET

Our breadstick wire basket doubles as a stylish napkin or silverware holder, adding elegance to your table. Made from polished 18/8 stainless steel with a weighted base, it pairs perfectly with the Standard Wire Baskets on page 150.

Breadstick Basket
3.75" X 3.75" X 5.5"

■ WBB5PS Polished



DOUBLE WALL PARTY TUBS

The Party Tub collection includes two durable, double-walled insulated beverage tubs designed to keep drinks cold without creating a mess. The large Party Tub features a 14.5-inch opening, perfect for holding nearly a case of beer, water, or soda, and is made from 18/8 stainless steel with a brushed finish to resist fingerprints. The Personal Party Tub is ideal for smaller gatherings, holding a six-pack of beer or four champagne bottles.



PERSONAL PARTY TUB

1.5 Gallon (192 oz) | 11" X 11" X 6"

- PT2BS Brushed Stainless
- PT2BSVG Vintage Gold
- PT2BSRG Rose Gold
- PT2BSDT Dark Tungsten

LARGE PARTY TUB

7 Gallon (896 oz) | 16.75" X 16.75" X 10"

- PT7BS Brushed Stainless



Fashionable party guests.

The Personal Party Tub is available in classic brushed stainless (BS) as well as metallic elements finishes, including vintage gold (VG), rose gold (RG), and dark tungsten (DT), while the Large Party Tub is offered exclusively in classic brushed stainless (BS).

Swatches



Sizes

1.5 Gallon

7 Gallon (BS only)



ROUND STAINLESS ICE BUCKET



Enhance your presentation with this elegant Stainless Ice Bucket—available in two great sizes. Featuring ergonomic ring handles that make it easy to carry and handle. Complete with drain tray and tongs in an attractive brushed stainless finish with polished accents.



Replacement parts: lid, tongs.

Round Stainless Ice Bucket

CLASSIC STAINLESS

1.3 Liter (44 oz) | 7.25" X 5.5" X 7"

■ IB13BS Brushed Stainless

3 Liter (101.4 oz) | 9" X 7" X 9"

■ IB3BS Brushed Stainless

Get It In **METALLIC ELEMENTS**

Round Stainless Ice Bucket

METALLIC ELEMENTS COLLECTION

Our Round Stainless Ice Buckets are now available in the stunning Metallic Elements Collection finishes: Vintage Gold (VG), Rose Gold (RG), and Black Onyx (BX). These exquisite options add a touch of luxury and sophistication to any beverage presentation.

Swatches



VG RG BX

Size

3 Liter (101.4 oz)
9" X 7" X 9"



IB3BSVG
Vintage Gold



IB3BSRG
Rose Gold



IB3BSBX
Black Onyx

ICE BUCKETS



SQUARE

The Square Ice Bucket has a distinctive design that looks great on bars and in hotel rooms. It features an attractive flat lid and rounded knob.



3 Liter (101.4 oz.)
8.75" X 7" X 9"

■ IBSQ3BS Brushed Stainless

WITH TONGS

The IBT Ice Bucket with Tongs is a great little fill-and-go ice bucket. It includes a pair of tongs and a convenient storage area within the lid.



1.5 Liter (50.7 oz.)
6.5" X 6.5" X 8.5"

■ IBT15BS Brushed Stainless

PLASTIC

Made of ABS plastic and has a double wall insulation to keep your ice longer and eliminate condensation. Portable and great for larger quantities of ice.



3 Liter (101.4 oz.)
9.75" X 7.5" X 9.5"

■ IB3BL Black

Replacement parts: lid, tongs.

WINE CHILLERS



Raise the bar with our Stainless-Steel Wine Chillers. Constructed with double-wall insulation, eliminating condensation on the outside of the chiller, so it can be left on the table for customers and guests—even in warm, outdoor settings.



You're going to need one of these too...



Commercial Cork Screw
2.75" X 1.5" X 8"
CSCRM2S
Heavy-Duty Stainless Steel



Brushed, No Bands
4.75" X 4.75" X 7.75"
WC1



Brushed, Polished Bands
4.75" X 4.75" X 7.75"
WC2MBBS



Polished, Brushed Bands
4.75" X 4.75" X 7.75"
WC2LBPS

SHAKERS & CADDIES



PLAIN STAINLESS SHAKERS

6 oz. | 2" X 2" X 5.5"

- STC3 3-Hole Top
- STC7 7-Hole Top
- STCMULTI Multi-Hole Top
- STCTEAR Teardrop Top
- STCMESH Mesh Top



ETCHED STAINLESS SHAKERS

6 oz. | 2" X 2" X 5.5"

- STC7VANILLA Vanilla, 7-Hole Top
- STCMULTICINN Cinnamon, Multi-Hole Top
- STCTEARCOCOA Cocoa, Teardrop Top
- STCMESHNUTM Nutmeg, Mesh Top
- STCMESHPSUGR Powdered Sugar, Mesh Top

SHAKER CADDIES

2 Compartment | 5.75" X 2.75" X 7.75"

STOH2V2 Polished Stainless

4 Compartment | 7.25" X 7.25" X 8.25"

STOH4 Polished Stainless



Mix and match shakers. Available with mesh, teardrop, standard and multi-hole tops, these shakers can be as versatile as you need in easy-to-clean stainless-steel construction. Shakers come unprinted, or in printed words: Vanilla, Nutmeg, Cinnamon, Powdered Sugar, Cocoa. Add the shaker caddies for easy access counter-top storage.



3-Hole Top



7-Hole Top



Multi-Hole Top



Teardrop Top



Mesh Top

TEA TIME

Complete your coffee service with personal cream and sugar.



TEA TIME STAINLESS TEAPOT

A sleek, spherical stainless steel teapot in two sizes, perfect for tea, coffee, or desserts, with a heat-safe elongated handle.

1.2 Liter (40.5 oz)
8.25" X 5.75" X 6.5"

■ TT12SS Polished Stainless

0.7 Liter
6.25" X 4.75" X 5.5"

■ TT07SS Polished Stainless

Replacement parts: lid.



TEA TIME CREAM & SUGAR SET

A charming addition to any coffee or tea service. It's elegant, polished finish adds luxury to any dining table, giving your guests a first-class experience.

6 oz. Cream, 5 oz. Sugar
7.75" X 4.25" X 3.75"

■ STCCRSGTRC Polished

Replacement parts: sugar bowl, creamer, tray.



SUGAR & CREAMER SET

This Sugar and Creamer Set includes 8 oz containers made from durable 18/8 stainless steel with chrome-plated plastic lids. The dishwasher-safe body ensures easy cleaning. Available as a set or individually.

8 oz. Creamer, 8 oz. Sugar Set
3.5" X 2.75" X 4.75"

■ SSC85 Brushed

Replacement parts: lids, silicone gasket.



PLASTIC SUGAR PACKET HOLDERS

Complete your table setting with versatile black plastic holders, perfect for sugar packets, butter patties, creamer, or jelly. Durable and easy to clean, they add a sleek, modern touch.

Large
5" X 2.75" X 2.25"

■ SPH5BL Black

Small
3" X 2.5" X 3.5"

■ SPH3BL Black

CREAM & SUGAR

Complete your coffee service with personal cream and sugar.

CREAM AND SUGAR CADDY



4 oz. Cream, 4 oz. Sugar
5.75" X 3" X 7.5"

- STCCRS4 Brushed Stainless
- STCCRS4VG Vintage Gold
- STCCRS4RG Rose Gold
- STCCRS4DT Dark Tungsten
- STCCRS4BX Black Onyx

Just the Creamer
2" X 2" X 2.75"

- STCCR4 Brushed Stainless
- STCCR4VG Vintage Gold
- STCCR4RG Rose Gold
- STCCR4DT Dark Tungsten
- STCCR4BX Black Onyx

Just the Sugar Holder
2" X 2" X 2.75"

- STCSG4 Brushed Stainless
- STCSG4VG Vintage Gold
- STCSG4RG Rose Gold
- STCSG4DT Dark Tungsten
- STCSG4BX Black Onyx

This creamer and sugar stick holder form a perfect pair, making it easy for guests to customize their coffee or tea. Ideal for gatherings or coffee shops, they enhance every cup with convenience and style.



Get It In **METALLIC ELEMENTS**

Cream & Sugar Caddy

METALLIC ELEMENTS COLLECTION

Available in the timeless brushed stainless finish and four striking Metallic Elements finishes: Vintage Gold (VG) for a classic touch, Rose Gold (RG) for subtle elegance, Dark Tungsten (DT) for modern sophistication, and Black Onyx (BX) for bold, dramatic refinement.

Swatches **Size**

VG RG BX VG

4 oz. Cream and Sugar
5.75" X 3" X 7.5"



SYRUP SAVER™ And Caddy



PLASTIC SYRUP SAVER™

The 10 oz. Syrup Saver™ Dispenser delivers precise control with a BPA-free body and unique rocker lid. Rockers snap into the lid for easy customization with colors and flavors without replacing the lid.

0.3 Liters (10 oz.)
4.75" X 2.75" X 5.5"

■ SR10BLC Black

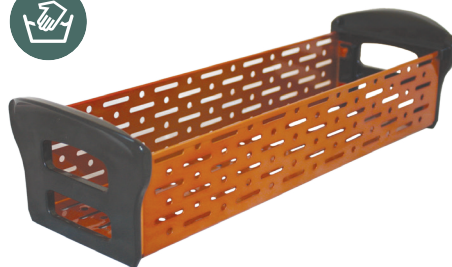


COPPER SYRUP CADDY

Store your Syrup Saver Dispensers in this retro Copper Syrup Caddy. It can also double as storage for jams, creamers and butter packets.

Fits 4 Syrup Savers
12.75" X 4" X 3.25"

■ SRC4CP Copper



CLASSIC SYRUP DISPENSERS

PLASTIC SYRUP DISPENSERS

These dispensers are ideal for restaurant chains due to their consistent appearance and reliable performance. They come in three timeless colors to distinguish various flavors, and the removable lid makes cleaning a breeze.



0.47 Liters (16 oz.)
4.25" X 3.5" X 6.25"

- SY916WH
- SY916BL
- SY916AL



CUSTOMIZE YOUR BEVERAGEWARE



PAD PRINTING AND ETCHING

Many of our products can be crested with pad printing or etching. Every product has a different print area and placement. Reach out to our customer service team to discuss which method is best for your product.

- Step 1:** Select Product
- Step 2:** Select Quantity
- Step 3:** Select Print Area
- Step 4:** Select Cresting Method
- Step 5:** Send Camera Ready Artwork

CUSTOM WRAP PROGRAM

Our custom wraps work great on airtots, thermal containers, and beverage dispensers. It's a great way to stand out and build your brand identity. Every product requires a different dieline. Contact customer service to request a dieline for your custom artwork.

- Step 1:** Select Product
- Step 2:** Select Quantity
- Step 3:** Design Your Wrap
- Step 4:** Send Camera Ready Artwork



CUSTOM PRICING & MOQs

Visit our website for more information on pricing and MOQs at serviceideas.com/customization

SI COMPONENTS™

A replacement spigot and accessory collection.



The SI Components™ collection stands as the preferred choice for faucets in our product lineup and is also accessible as standalone components for beverage dispensers. Feel free to reach out to our product and sales team to explore tailored OEM specifications. When you collaborate with Service Ideas, you can expect a top-tier product that adheres to the relevant fundamental criteria set by NSF International.



SI COMPONENTS

Scan the QR code for the full brochure of SI Components™.
Contact us through our website for a custom inquiry.

Index

Service Ideas 2025 product index.

Bold text = New product and line expansions

BUFFET

COFFEE URNS & GRAVITY POTS

Flame Free™ Thermo-Urn™	08
Universal Thermal Containers	20
Slim Line Thermal Containers	22

COLD BEVERAGE DISPENSERS

Stainless Tea Urns	24
Clear Tea Urn	25
Square Infusion Dispenser	26
Double Wall Dispensers	28
Double Wall Fancy Feet Bases	30
Elite Cold Beverage Dispensers	32
Essential Beverage Dispensers	34
Classic Beverage Dispensers	36
Cold Brew 'N' Serv™	38

BUFFET ACCESSORIES

Laser-Cut ID Tents	40
Laser-Cut ID Signs	41
Drip Trays	42

NON-BEVERAGE BUFFET

VersaVac Bottle	46
Tray-Pod Risers	48
Tabletop Trash Cans	50

AIRPOTS

INSULATED AIRPOTS

Color-Me SVAC	52
Eco-Air® Glass-Lined Airpots	56
Eco-Air® Slim Stainless Airpots	58
Eco-Air® Lids	59
Signa-Air Airpots	60
SteelVac™ Airpots	62
Lock 'N' Carry Airpots	64
ErgoServ® by Service Ideas	74

AIRPOT DISPLAYS

Airpot Cover-Ups	66
Stainless ID Chains	67
Build-Your-Own Airpot Rack	68
Combo Airpot Stations	70
Plastic Roto Rack™	71

Wire Airpot Racks	72
Modular Airpot Stands	73
Condiment Caddies	73

SERVERS

ERGO-SERV® COMMERCIAL BY SERVICE IDEAS

ErgoServ® Commercial Carafes 76

ELITE SERVERS

Nicollet Series Carafe	82
Marquette Series Carafe	84
Altus Carafes	86
Smart Choice Server	88
Stainless Square Server	89
Classy™ Carafes	90

ESSENTIAL SERVERS

Flow Control Carafe	92
Slim Servers	94
Stainless Touch	95
SteelVac™ Creamers	96
SteelVac™ Essential Carafe	98
SteelVac™ Brew-In Carafe	100
SteelVac™ Slim Carafe	101
Portion Control Server	102

CARAFE ACCESSORIES

Flavor Bands	103
--------------	-----

BREW-THRU CARAFES & DECANTERS

Brew & Pour® Carafe	104
Classic Clear Decanter	106
Brew-Thru Mini Carafe	107

CLASSIC SERVERS

Thermo-Serv® Carafe	110
New Generation® Servers	112
Eco-Serv™ Carafe	114
Twist 'N' Serv™ Carafe	116
Classic Carafe	118
Coffee-At-A-Touch Carafe	120
Alpha Carafe	121

STAINLESS WATER PITCHERS

Original Slim Pitcher	122
Slim Pitcher Clear Lid	123
Double Wall Slim Pitcher	124
Double Wall Bell Pitcher	124
Original Bell Pitcher	125
Altus Pitcher	126
Foam-Lined Stainless Pitcher	127

PLASTIC WATER PITCHERS

Ice Tube Pitchers	128
SI Commercial Clear Pitcher	130
Waterway Carafe	130
Flavor Infusion	131
Sculptured Ice™	131
3-Way Pitcher	131

SPECIALTY COFFEE SUPPLIES

Double Wall Stainless Press	132
Double Wall Glass Press	133
Frothing Pitchers	134

TEA SUPPLIES

Ceramic Teapots	136
Double Wall Plastic Teapot	138
Tea Time Teapot	140
Classic Tea Press	140
Tea Ball	141
Beechwood Tea Boxes	141

TABLETOP

INSULATED PLATTERS & SKILLETS

Thermo-Plate® Platters	144
Hot Solutions™ Platters	150
Hot Solutions™ Skillets	152

TABLE SERVEWARE

Fiesta Solutions 148

TABLE SERVICE LIGHTS

Push-for-Service Light	154
------------------------	-----

BAR TRAYS

Modern Edge Trays 157

Non-Slip Removable Insert Trays	158
Metallic Elements Trays	160
Natural Elements Trays	161
12-Sided Removable Insert Trays	162
Non-Slip Silicone Surface Trays	164
Elegant Stainless Serving Tray	165

MOD18 STEELWORKS

Mod18 Serving Trays	167
Mod18 Deco Collection	170
Original Mod18	172

TABLETOP (CONT.)

BASKETS

Standard Wire Baskets	174
Cornucopia Wire Basket	174
Wave Wire Baskets	175
Oval Wire Basket	175
Breadstick Wire Basket	175

BAR & WINE

Double Wall Party Tubs	176
Round Stainless Ice Bucket	178
Square Ice Bucket	180
IBT Ice Bucket with Tongs	180
Plastic Ice Bucket	180
Double Wall Wine Chillers	181
Commercial Corkscrew	181

COFFEE CONDIMENT ACCESSORIES

Shakers & Caddies	182
Tea Time Cream & Sugar Set	184
Tea Time Stainless Teapot	184
8oz Sugar & Creamer Set	185
Plastic Sugar Packet Holders	185
4oz Cream & Sugar Caddy Set	186

TABLE ACCESSORIES

Syrup Saver™ & Caddy	188
Classic Syrup Dispensers	189



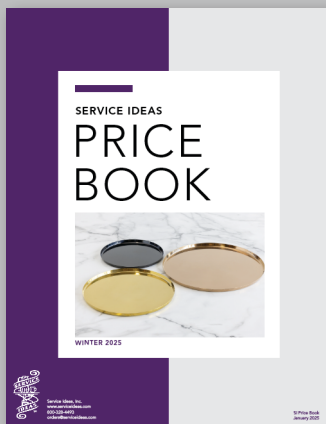
PRODUCT CUSTOMIZATION
190



BEVERAGE SPIGOTS
191

Pricing

For more information on pricing, parts, and availability, call customer service toll free at **1-800-328-4493** or visit our website **www.serviceideas.com**.



Scan the QR code for the most recent **Price List and Parts Guide**.

Contact us through our website for a custom inquiry.

Terms & Conditions

Terms and conditions apply to products listed in the 2024 catalog and on the Service Ideas website.

TERMS

1% interest 10 days from date on invoice, net 30 days. Accounts showing balances owing past 60 days will be placed on credit hold and charged 1% interest per month. Orders may be paid by MasterCard, Visa or American Express at receipt of invoice. Credit card orders are not eligible for cash discount. Any orders paid by credit card later than 10 days from invoice date may be subject to a 3% handling fee.

FREIGHT

Visit serviceideas.com/terms-conditions for the current freight policy.

BROKEN CASES

All products are sold in standard packing cartons only as listed in the price list. Any order calling for less than standard pack will be charged \$8.00 NET PER CASE.

CREDIT

Orders placed by buyers without established credit with Service Ideas, Inc. must be accompanied by check, credit card, or credit application. Initial orders for open credit status must meet a minimum net total of \$500. Orders will ship as soon as possible after credit has been approved or regular check has cleared. Orders paid by cashier's check, MasterCard, Visa, American Express, certified check or money order will ship as soon as possible. Call 1-800-328-4493 for exact cash amounts or to request a credit application. We reserve the right to establish or refuse any business entity or individual as a customer.

SPECIAL ORDER ITEMS

A sign off will be required on our special order release form stating that the order will not be canceled or returned. Minimum order quantities are required.

PRICES

All prices in US dollars (\$) are subject to change without notice.

LOST AND DAMAGED SHIPMENTS

Risk of loss is buyer's upon delivery to carrier; therefore, whenever the seller shall deliver or cause to be delivered to a common carrier, any goods ordered by buyer, whether the particular common carrier shall have been designated in the shipping or routing instruction of buyer or not, seller shall not be responsible for any delays or damages in shipment and the common carrier to which the seller shall deliver goods shipped to buyer is hereby declared to be the agent of the buyer. All shortages or damages must be reported within 48 hours to the carrier and Service Ideas. Secure an inspection report from the carrier. Concealed damage not reported to Service Ideas within 30 days of delivery will not be eligible for credit.

RETURNS

By definition, returns are any merchandise sold by Service Ideas, Inc. that is to be returned to the factory. Stocked product returns within 6 months of invoice date are **NOT SUBJECT TO A RESTOCKING CHARGE**. Returns received 6–12 months of invoice date or related to overstock are subject to restocking charges, not to exceed 20%. No returns will be accepted after 12 months. Prepaid dropship orders will be subject to restocking fees. All returns to be restocked must be complete case packs, received in the unopened original cartons and merchandise must be current, standard catalog items. We are unable to accept returns of obsolete, special order, custom or crested products. No merchandise will be accepted for return without prior authorization. All returns must be freight prepaid. To receive authorizations please call 1-800-328-4493 and provide the following information:

- Company name, address, phone number
- Exact carton count
- Original invoice number and purchase order number
- Reasons for return
- Exact quantity and model numbers

SERVICE IDEAS WARRANTY

Products noted with warranty symbol are warranted against manufacturer defects for specified years. As a manufacturer of fine products, Service Ideas, Inc. is interested in knowing about any problems you may experience. We will work with you individually to determine if the problem is caused by a manufacturer's defect.

Care & Handling

HANDLING

For optimal retention, remove or flip open lid and preheat server with warm water. Empty contents and refill with hot beverage. Secure lid closure. Varying factors that effect temperature are content levels, topping off, and open lids. Servers should not be heated in a microwave, contain boiling water or liquids at temperatures above 200 degrees.

CLEANING

For optimal care, servers should be hand washed with mild detergents.

Exterior: Wipe with a soft, damp cloth, followed with a dry cloth.

Interior: Clean with lukewarm water and mild detergent and

rinse with hot water. Never submerge in water.

Never clean plastic servers with vinegar as it will be absorbed by the material and leave a vinegar taste.

For glass lined servers, to avoid damage never clean a with a brush, and avoid chemical detergents.

For push button lids, depress button and flush water through. Push button lids are not dishwasher safe.

For stainless steel products listed dishwasher safe, use only high-temp dishwashers that don't use chemicals that will erode the stainless steel.

STORAGE

All products are best stored in a cool, dry place away from heat sources.

Frequently Asked Questions

DO YOU SELL REPLACEMENT PARTS?

Yes. 95% of our products have replacement parts available. Check online at www.serviceideas.com.

WHAT'S YOUR RETURN POLICY?

Returns within 6 months are not subject to restocking charges. Anything after 6 months will be subject to restocking charges not to exceed 20%. No merchandise that is discontinued will be accepted for return without prior authorization. Please call 1-800-328-4493 to receive your RMA #.

WHAT'S SHIPPING LEAD TIME?

All in-stock orders are shipped within 48 hours. Non-stock and custom items are shipped within 8-12 weeks

HOW LONG DOES TEMPERATURE HOLD IN PLASTIC?

Anywhere from 2-3 hours

HOW LONG DOES TEMPERATURE HOLD IN STAINLESS VACUUM?

Anywhere from 4-6 hours

HOW LONG DOES TEMPERATURE HOLD IN GLASS?

Anywhere from 6-8 hours

DO YOU HAVE A WARRANTY?

Service Ideas is interested in knowing about any problems you may experience. We will work with you individually to determine if the problem is caused by a manufacturer's defect.

CAN I REQUEST ANOTHER CATALOG?

Yes. E-mail Service Ideas at literature@serviceideas.com or call 1-800-328-4493.

CAN I COOK ON THE THERMO-PLATE STAINLESS INSERT?

No. To prevent warping, stainless and aluminum plates should never be subjected to an open flame.

CAN YOU PUT HOT BEVERAGES IN THE ZE PÉ DISPENSERS?

The Ze Pé beverage dispensers are meant for only cold beverages. Do not put hot beverages in the dispensers.

WHAT IS CAMERA READY ARTWORK?

We accept high resolution digital artwork (300 dpi or higher) in an Illustrator, .eps, .tif or .jpg format.

- 300 DPI resolution is the minimum requirement for pad printing
- 600 DPI resolution is the preferred requirement for etching

NOTE: Service Ideas is not able to modify logos or art.

DO YOU TAKE CREDIT CARDS?

Yes. We accept VISA, MasterCard and American Express.

HOW DO I PLACE AN ORDER?

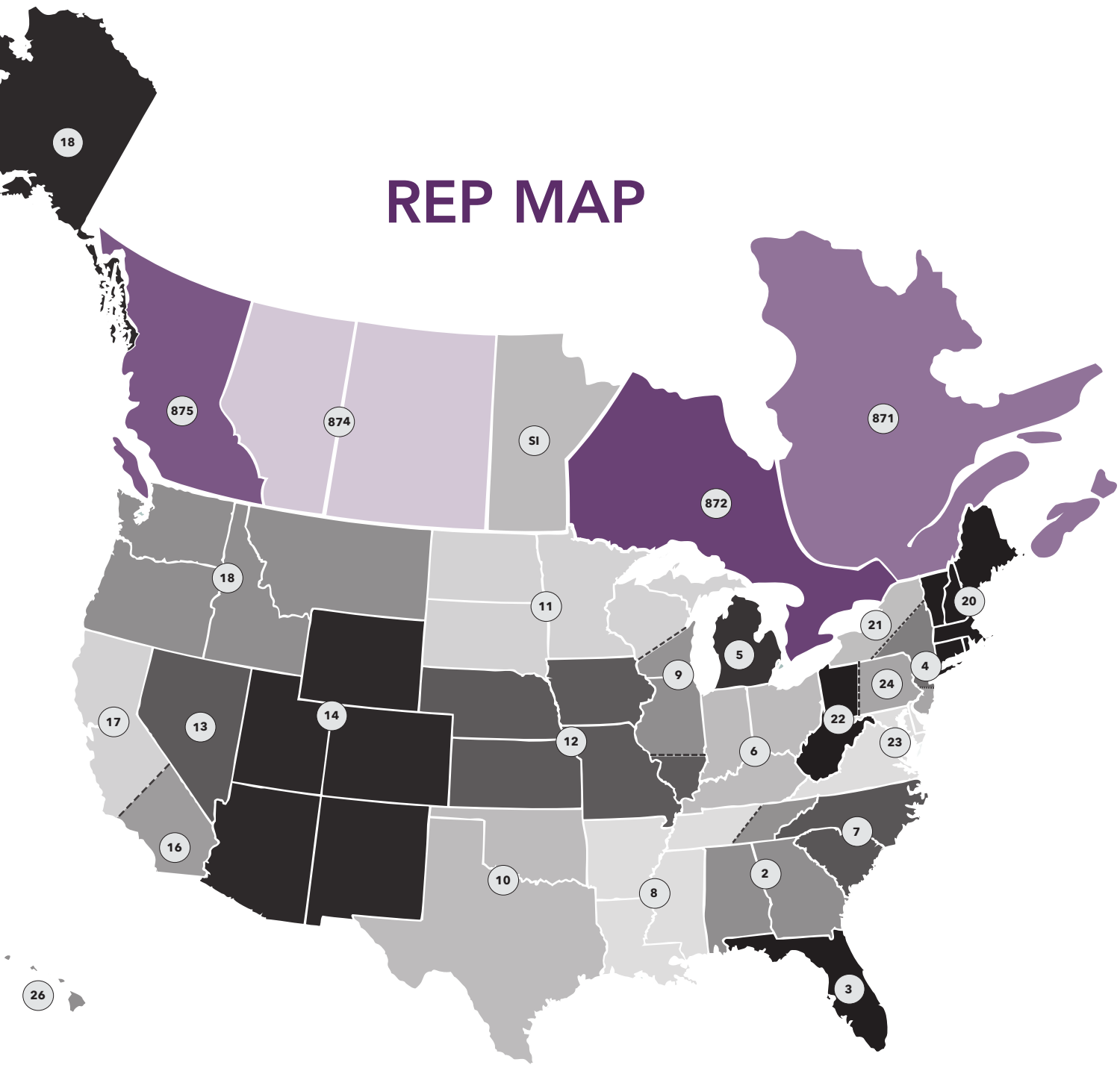
Simply e-mail us at orders@serviceideas.com or log on to our website at www.serviceideas.com.

FOODSERVICE REPS

PLEASE CALL AHEAD AND SET UP A SHOWROOM APPOINTMENT

- 2 ELLSWORTH MARKETING & ASSOCIATES**
Alabama, Georgia, Eastern Tennessee
678-691-8104 Fax 678-691-8105
- 1001-1101 Kermit Dr. Suite 109
Nashville, TN 37217
 - 3157 Presidential Dr. #203
Atlanta, GA 30340
- 3 TABLETOP DOGZ**
Florida
941-377-9507
- 4 CLV MARKETING**
New York & North New Jersey
631-694-7170 Fax 631-964-7243
- 43-01 22nd St., Suite 534
Long Island City, NY 11101
- 5 MIDWEST ASSOCIATES**
Michigan (Exclude Upper Michigan)
586-263-1229 Fax 586-263-6055
- 27186 Dequindre
Warren, MI 48092
- 6 GABRIEL GROUP**
Indiana, Kentucky, Ohio,
Western Pennsylvania, West Virginia
616-583-9720 Fax 616-583-9720
- 1523 Republic Street, Unit 101
Cincinnati, OH 45202
 - 8501 Bash Street, Suite 1300
Indianapolis, IN 46250
- 7 CAROLINA FOODSERVICE SOLUTIONS**
North Carolina & South Carolina
919-518-0873
- 11125 Treynorth Dr.
Cornelius, NC 28031
- 8 ECHO FOOD SERVICE MARKETING**
Arkansas, Louisiana, Mississippi,
Western Tennessee
985-373-7273
- 3801 Causeway Blvd Ste. 209
Metairie, LA 70002
- 9 MIRKOVICH & ASSOCIATES, INC.**
Northern Illinois & East/S. East Wisconsin
630-792-0080 Fax 630-792-9914
- 1064 N. Garfield St.
Lombard, IL 60148
 - 1501 Paramount Dr., Suite D
Waukesha, WI 53186
- 10 PREFERRED SOURCE**
Oklahoma & Texas (Excludes El Paso)
214-912-7713 Fax 214-855-5297
- 1103 Alexis Court, Suite 101
Mansfield, TX 76063
 - 9925 Circle Dr.
Austin, TX 78736
 - 3440 Sojourn Dr., Suite 225
Carrollton, TX 75006
 - 4231 Bellaire Blvd. Suite N
Houston, TX 77025
- 11 DALY & De ROMA GROUP**
Minnesota, North Dakota, South Dakota,
Western Wisconsin & Upper Michigan
763-543-8080 Fax 763-543-8181
- 18200 45th Ave No, Ste C
Plymouth, MN 55446
- 12 CREATIVE HOSPITALITY SOLUTIONS**
Southern Illinois, Iowa, Kansas, Missouri
& Nebraska
913-378-1691 Fax 913-764-8668
- 12730 State Line Rd.
Leawood, KS 66209
 - 2121 January Ave.
St. Louis, MO 63110
- 13 AJ SALES, LTD.**
Nevada (Las Vegas)
702-468-1499
- 14 CURATE SALES GROUP**
Arizona, Colorado, New Mexico,
Texas (El Paso), Utah & Wyoming
303-373-1940 Fax 303-371-1557
- 7070 E. Indian School Rd.
Scottsdale, AZ 85251
 - 4665 Joliet St.
Denver, CO 80239
- 16 CYMCO SALES & MARKETING**
Southern California
582-619-3660
- 17 THE ACTION GROUP**
Northern California & Nevada
800-670-9824 Fax 952-957-6256
- 2608 9th St. Suite 201
Berkeley, CA 94710
- 18 RHI**
Alaska, Hawaii, Idaho, Montana,
Oregon & Washington
425-251-0531 Fax 425-251-0543
- 5628 Airport Way S., Suite 250
Seattle, Washington 98108
- 20 4TOP HOSPITALITY SOLUTIONS**
Connecticut, Maine, Massachusetts,
New Hampshire, Rhode Island & Vermont
781-257-2870
- 1005 Main St. Suite 8132
Pawtucket, RI 02860
- 21 LAKE EFFECT FOODSERVICE SOLUTIONS**
Upstate New York
716-731-1736 Fax 518-252-6174
- 908 Niagara Falls Blvd.
North Tonawanda, NY 14120
- 23 HOSPITALITY DYNAMIC SOLUTIONS**
Maryland, Washington D.C., Delaware
& Virginia
202-251-1082
- 1422 Portner Road, Suite 9
Alexandria, VA 22314
- 24 MAXWELL-MCKENNEY**
Southern New Jersey &
Eastern Pennsylvania
856-310-0700 Fax 856-310-0700
- 116 White Horse Pike
Haddon Heights, NJ 08035
- 871 LES AGENCES DINCO, INC.**
Canada-Quebec & Eastern Provinces
514-697-8075 Fax 514-697-9478
- 16891 Hymus Blvd.
Kirkland, Quebec H9H 3L4
- 872 TOTAL TABLETOP PLUS**
Canada-Ontario
905-607-4893 Fax 905-607-9836
- 15-3330 Ridgeway Dr.
Mississauga, ON L5L 5Z9
- 874 CANVAS TABLETOP**
Canada-Alberta, Saskatchewan
403-992-6470
- 875 WEISS WARES, LTD**
Canada-British Columbia
604-463-8141 Fax 604-477-8141
- GX Building
1868 Glen Drive, Unit #248
Vancouver, BC V6A 4K4
- INTERNATIONAL**
- H.D. Sheldon & Company, Inc.
212-924-6920 Fax 212-627-1759
- Greenfield World Trade
954-202-7336

REP MAP



OCS/COFFEE REPS

ABILITY REPS

New England (Connecticut, Maine, Massachusetts, New Hampshire, Rhode Island & Vermont)
978-281-2700

PWA FOOD GROUP

Wisconsin, Illinois & Michigan
708-579-5567 Fax 708-579-3287

ALL OTHER AREAS NOT LISTED

coffee@serviceideas.com
800-328-4493



www.serviceideas.com
800-328-4493
cs@serviceideas.com

